

MISSION STATEMENT AND PROJECT GUIDING PRINCIPLES

JHS MODERNIZATION MISSION STATEMENT

The new modernized Jefferson High School will provide each student with an equitable, individualized, high-quality learning experience and the tools to reach their full potential within an environment that is safe, healthy, and joyful.

The new comprehensive high school will embody PPS's Mission, Vision and Values, and its Climate Policy, to strengthen the future of its students and its communities through the following Guiding Principles:

GUIDING THE PROCESS



- Design for Equity & Justice**
 - Center engagement through the lens of Design Justice, and work with community-based organizations and community members to reach, hear from, and be responsive to Black and Brown communities, empowering these stakeholders in the design process to build pride of ownership
 - These communities, who will be most disproportionately impacted by this work in relation to their experiences of past marginalization, must be in the position to directly and meaningfully influence project decisions. This includes the community members who have been geographically displaced but remain culturally rooted in historic Albina—namely Portland's historic Black community.
- Resiliency & Equity of Investment**
 - Demonstrate an equity of investment compared to other PPS modernization projects, providing welcoming, safe, healthy, resilient and accessible facilities that are flexible, adaptable and designed to accommodate future change.
- Transparency & Decision Making**
 - Support equitable access to JHS space as a cultural and civic resource for Black and Brown families, partners, and community members who are disproportionately impacted by gentrification, displacement, housing instability, and the digital divide.
 - Demonstrate honesty and integrity in every action, with sincere, ethical, transparent and accountable communication and decision making in service of the Jefferson community. [Adapted from PPS Core Values]
 - Adopt a design and construction process that is based on equity, teamwork, collaboration and trust, which minimizes negative impacts for students, teachers and staff, and for Jefferson's neighbors, and maximizes opportunity for input, engagement and workforce development.

GUIDING THE CULTURAL EXPERIENCE



- Heritage and Representation**
 - Center JHS as a cultural landmark and community hub, proudly reflecting its rich Black history and the legacy of the school while creating a welcoming, safe and supportive gathering place where all cultures feel welcomed and represented.
 - Amplify joy and create inspirational and beautiful spaces that all community members can be proud of and which demonstrate and celebrate creativity as an inherent value of the JHS community, culture and history.
 - Celebrate past achievements and create resources that are accessible to the Black communities that have been geographically displaced but remain culturally rooted in the historic Albina area.

GUIDING THE SCHOOL PROGRAM



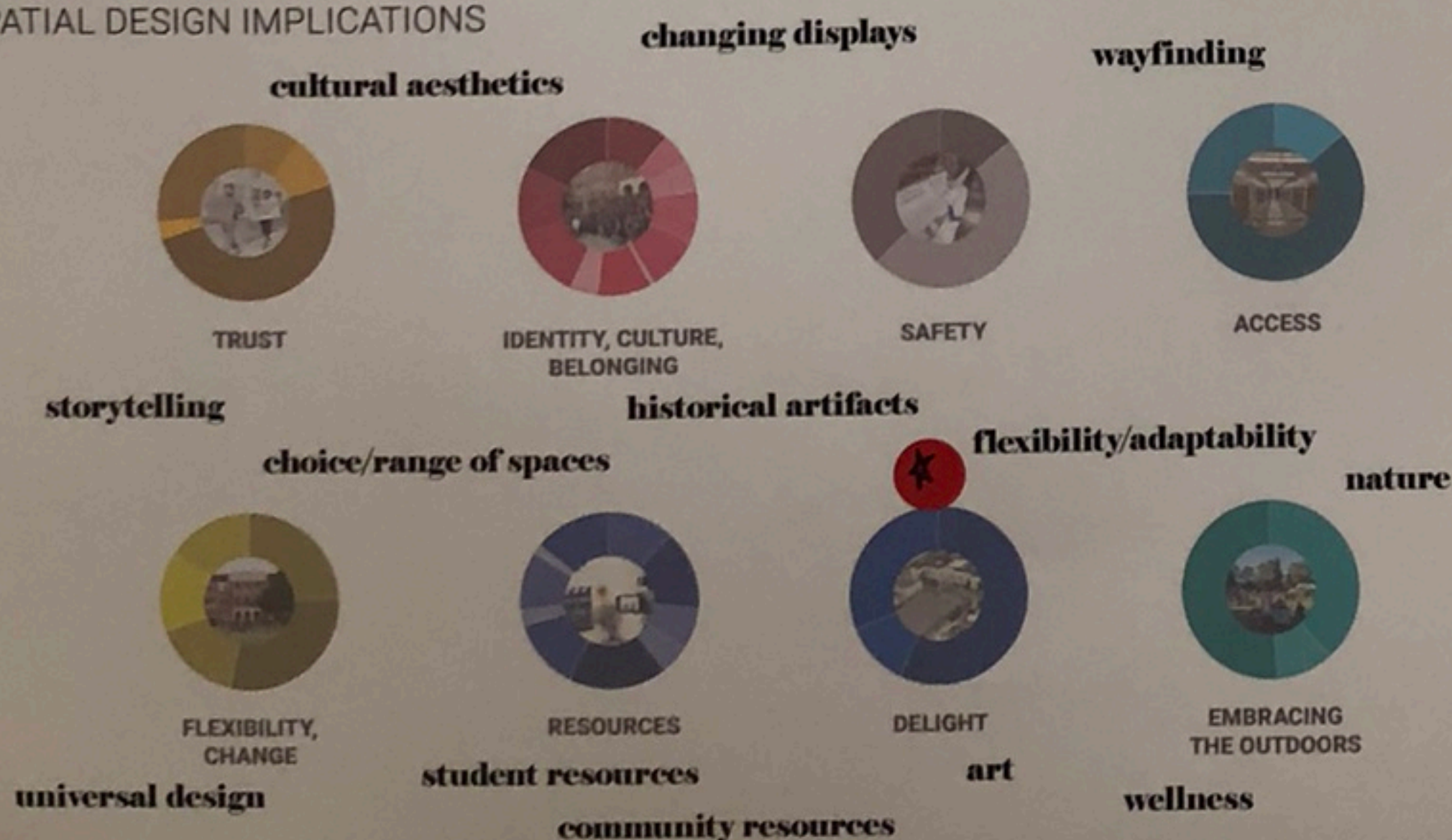
- Learning Experience**
 - Support a rich variety of educational opportunities and elevate academic excellence, with state-of-the-art teaching spaces, partner programs, and a campus environment that rivals any in the school district, celebrating Jefferson's unique programs and reflecting the voices of its students and community while meeting the requirements of PPS's educational specifications.
 - Elevate Arts and Athletic facilities so their physical spaces are on par with the high caliber of their respective programs, demonstrate excellence, and spark pride in the students and larger community.
 - Thoughtfully consider the way the built environment maintains a seamless continuum of experiences for students PK-12 by drawing familiar connections to the middle grades and extending opportunities to higher education.
 - Provide a range of safe and accessible spaces designed to support a broad spectrum of students and community members.

NARRATIVE THEMES + SPATIAL IMPLICATIONS

NARRATIVE THEMES JEFFERSON HIGH SCHOOL



SPATIAL DESIGN IMPLICATIONS



Comments from community engagement events were synthesized and grouped by narrative themes. Themes are diverse in point of view and matter but tell a story about communities, principles and values, for example:

- Who is most impacted by the project
- Who is most vulnerable in the communities associated with the project
- What the prevalent concerns of these communities may be
- Existing operational considerations and experiences
- Outstanding questions and concerns about the project
- Potential opportunities that communities, as the people who have the most insight about the underlying conditions of the project site, are excited about.

Comments were further synthesized into categories of policy & process implications, program implications, and spatial implications. The design team is using the program and spatial implications to develop the design principles and the goals for the project.

Love these concepts
Really want to see them implemented

Where Kids can be Kids

DESIGN PRINCIPLES

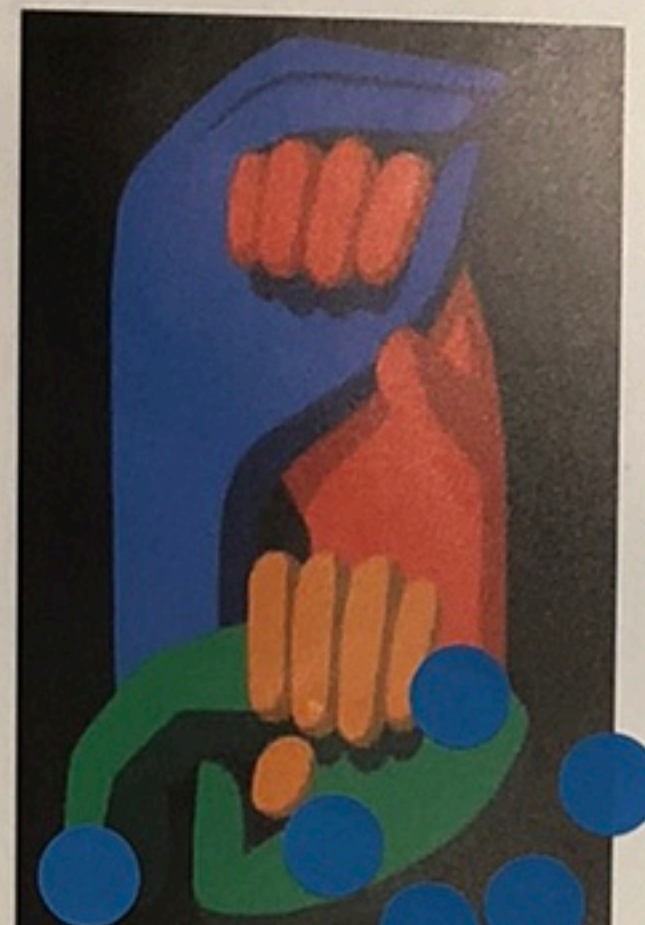
The set of key design considerations below, created in response to the community engagement narratives and spatial implications, will act as guideposts for the design team throughout the project.



CONNECT
Communities
Past Present Future



MOVEMENT
Direct
Active Hallways



BELONGING
Art + Culture
Diversity



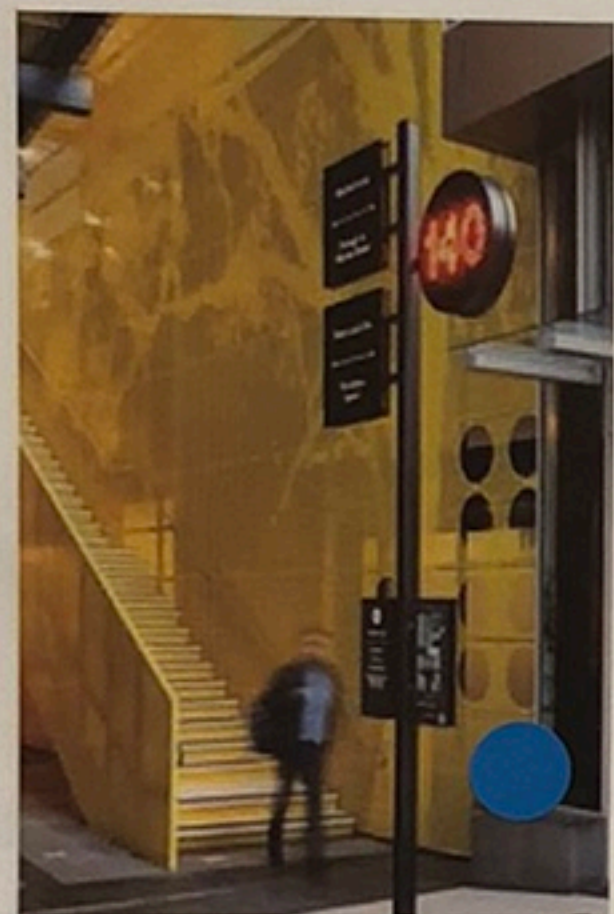
CLIMATE JUSTICE
Impact
Reduction + Efficiencies



WELLNESS
Daylight
Healthy Air



NATURE
Views
Outdoor Space



WAYFINDING
Intuitive
Landmarks



CALL AND RESPONSE
Interactive
Improvisational



MACRO/MICRO
Scales
Multi-sensorial



CHOICE
Universal
Neurodiverse

Give us feedback

Put a **blue** dot on ones that resonant

What's missing?

Share your thoughts on sticky notes below.

Experience
How does student community
adapt as the school
changes?

OPEN
VERSATIVE
SPACE

Creating spaces that
honor culture +
diversity, feel safe
and promote
wellness

SUSTAINABILITY VISION

The JHS Modernization project is the first to kick off since the adoption of the PPS Climate Crisis Response, Climate Justice, and Sustainable Practices Policy. This represents both the opportunity and the responsibility to lead this effort and set an example for the District, the City of Portland, and the State of Oregon on how meaningful Climate Action will result in safer, healthier, and more just communities. Below outlines the sustainability vision for the future JHS.

Give us feedback **The future Jefferson High School aspires be a leading example of how a school can address climate justice. What is essential for this to be successful?**

Share your thoughts on sticky notes below:

HEALTH



The new JHS will support occupant health by delivering clean air and water, and avoiding common interior materials that are known to negatively impact health.

- All primary learning spaces will have access to quality, abundant daylight. This will be deliberately planned by preparing a space-by-space environmental criteria document.
- Existing spaces without sufficient daylight access will be reserved for program elements that do not require daylight, such as storage or darkrooms.
- Indoor Air Quality will be paramount. Recognizing the challenges associated with both pollution from I-5 and increasing seasonal wildfire smoke, design will prioritize healthy air and ongoing monitoring will ensure that indoor air meets pre-established criteria.
- Heat island effect will be addressed with an increase in site trees. North Portland suffers from warmer temperatures than elsewhere in the city because of a lack of tree cover. Working with the City's urban forestry, the future of Jefferson High School will prioritize healthy urban trees on the site, with benefits for lowering energy use and better air quality. Athletic fields will take precedence for site use and green roofs will also be explored to mitigate heat island effect.

Sustainable sources of power (i.e. wind, solar, hydro, etc.)

DECREASE CONSUMPTION
MULTI-USE RESOURCES
(Lighting, water)

Climate justice and leadership by design that have solar windows, roof tiles

teaching students to grow food for the community (your friend)

I like all of this and hope Jefferson can lead the way in these efforts

Integrating building as learning opportunity

CLIMATE

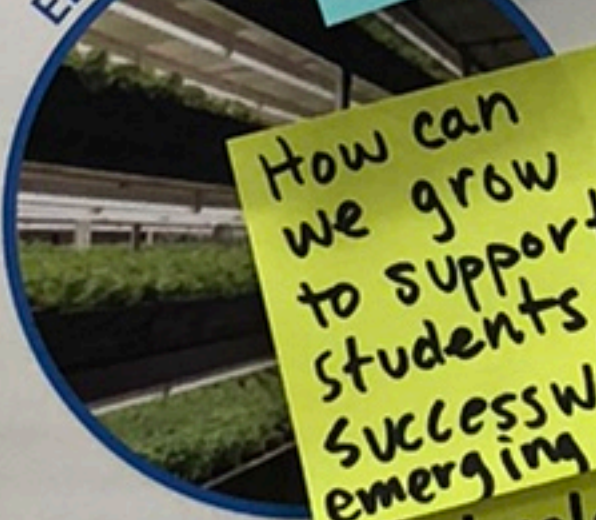


The new JHS will be a national example of climate responsive design, incorporating strategies that support education, empower the community, and advance justice.

- The project will utilize all-electric building systems to decrease fossil fuel consumption, protect local air quality, and remain resilient in the face of potential future energy price shocks.
- The project will prioritize solar orientation for building massing decisions. This will enhance daylight access in learning environments, improve thermal comfort by decreasing heating and cooling loads, and allow for safe building operations during power outages.
- The building form and program layouts will seek to create spaces that prioritize student and community experience in a way that can also accommodate mass timber construction.
- The building will support healthy and sustainable transportation by collaborating with PPS on their electric fleet program and provisioning secure, covered bike parking with access to eBike charging.

Durability

EDUCATION



The new JHS will incorporate climate action, climate preparedness, and climate justice into its curriculum, using the design of the school and a teaching tool.

- A dashboard that shows building performance will be displayed to keep the students informed on energy use, water use, indoor environmental conditions, and the actions that they take as individuals to make improvements.
- Explore the opportunity for an on-site garden or aquaponics facility that can be maintained by students and supply food while managing compost.
- Seek unique opportunities to use the building to educate students about climate change and resilience
- Reuse materials from the existing buildings onsite to educate student and community members about the site's history.
- Incorporate educational signage on sustainability, health, resilience, ecology, and climate action.

How can we grow to support students in successful emerging technologies?
Computer Lab? (Beyond)

We don't even know the platform technologies that will be used in 2030

RESILIENCE



- Jefferson High School will be designed to support the community in times of emergencies, including passive cooling and natural ventilation will allow for passive cooling during future power outages
- Operable windows that increase air flow through spaces to alleviate the health impacts of respiratory pandemics.
- Backup power will be explored during design
- Water collection and storage will help offset summertime potable water use and allow for more effective stormwater management.
- The new JHS will anticipate the future effects of climate change and prepare the school and community to better weather coming storms.

Are these efforts that are important to the current Jefferson community or to the community that is being sought out?

Sustainability of Space:

How do we ensure spaces are flexible over the long term. The auto shop here is a prime example of space that was a great idea at one time that hasn't transitioned with the school. Are programs we are building for now still going to be relevant in 10-20-30 years?

or multipurpose?
Thanks, Eric

This should be a priority not an after thought.

SS



The new Jefferson High School will prioritize access for students with all different abilities and all users will be fully incorporated into every space.

- All student spaces that will be accessible by all students.
- Floors will be aligned as best as possible and ramps, rather than stairs will be used where changes in level are necessary.
- The site programming and building entrances will be accessible to all students.
- Acoustical quality within classrooms will be priorities to education. Relevant criteria and thresholds will be developed.

DESIGN GOALS

The new Jefferson school will undergo a full modernization and meet the PPS high school education specifications, design guidelines and standards, and the PPS Climate Policy. Jefferson will be the first high school modernization project since the passing of the PPS Climate Policy in March 1, 2022. This represents great opportunity and responsibility for this project to lead this important work and set an example for future PPS modernization projects.

While the exterior walls and roof of the 1909 building will be refurnished and updated, the interior of the 1909 building will be completely new including upgraded structure to meet current building codes, all new building systems including mechanical, electrical, plumbing and fire suppression, technology systems as well as all the architectural elements such as floors, walls and finishes.

In addition, these specific goals were developed based on the key narrative themes from stakeholder engagement:

Create a **social hub** at the center of the school, connected to outdoors

Redefining 'A' floor as the main level and creating a new **main entry connected to the street and reconnect to 1909 original entry**

Activating building edges with partner spaces to **create a community hub**

Foster belonging and celebrate diversity of cultures

Remember and build on JHS past and present

Clear direct navigation and **make wayfinding intuitive**

Create a low carbon school using **mass timber**

Promote health and better learning by prioritizing daylight, views, great acoustics and air quality

"People want to change Jefferson, but the truth is that Jefferson changes you"

Keep the tree



Give us feedback

Do these represent the future JHS that you would like to see?

What's missing?

Put your thoughts on sticky notes below.

Solar!!

GARDEN!
HABITAT!

Real Kitchen
with REAL Food
cooked on
premises to
demonstrate and
encourage students
by example

Year-round
gardening

Cooking class
and skills.
Food to water
cultures

GARDEN

Diversity is
important, but
truly highlighting
the culture that
has been most
prevalent is
most important

OPEN
SPACE

Solar
Garden
Kitchen +
Cooking lesson-
class program

+ Social
hub

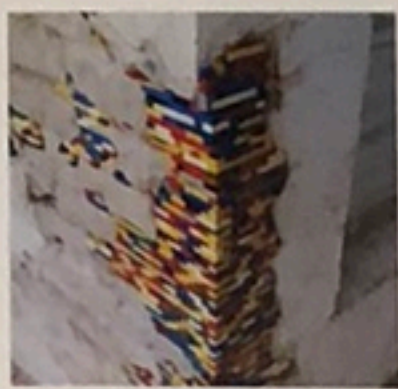
Pool for
multiple
athletics

Community Engagement:

These newly remodeled High Schools are amazing spaces. How can we get more members of the community to enjoy them? For anyone grumbling at the price, using and experiencing the space being used would really clear up where that it is going and whether it is worth it. -Eric

DESIGN CONCEPT

Build on JHS past and present **REMIX** to create the new future



Legos: concrete - This represents blending the new with the old in a way that doesn't hide past damage and neglect but repairs it, strengthens it, adorns it ~~and~~ and honors resilience.

Beh

10/15/22

Give us feedback

What stories to tell? What existing artifacts to keep?

Put your thoughts on sticky notes below.

Add a **BLUE DOT** to indicate images that resonant.

BLUEPRINTS
OLD EQUIPMENT
AS ART
SALVAGE MATERIAL

ARTS + CULTURE BASED

tell the story
of how
Jefferson
has hosted students
and the community
since it began

WHERE
ARE THE
IMAGES OF
♀ HERE!!!

THE HISTORY +
CITY HISTORY +
NATIONAL
HISTORY



DESIGN CONCEPT

The concept of Kaleidoscope reflects the idea that future look and feel of JHS is dynamic, diverse in expression with infinite possibilities and beauty.

Similar to a kaleidoscope that contain only a few objects within but produces everchanging patterns, this concept seeks to create a consistent palette of colors and shapes that can be composed and recomposed or **REMIX** in varies ways offering different areas of the school their own rich and unique identity.

kaleidoscope multiple reflections of cultures, pride, joy and excellence / past, present and future / varied light, color and shapes



UNIFIER
connecting



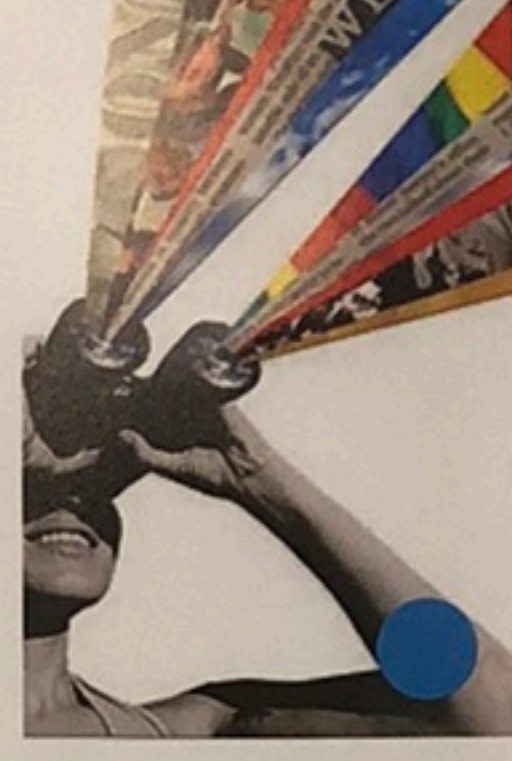
EXPRESSIVE
identities



BOTH/AND
celebrate



EVER CHANGING
never stagnant



INFINITE
opportunities



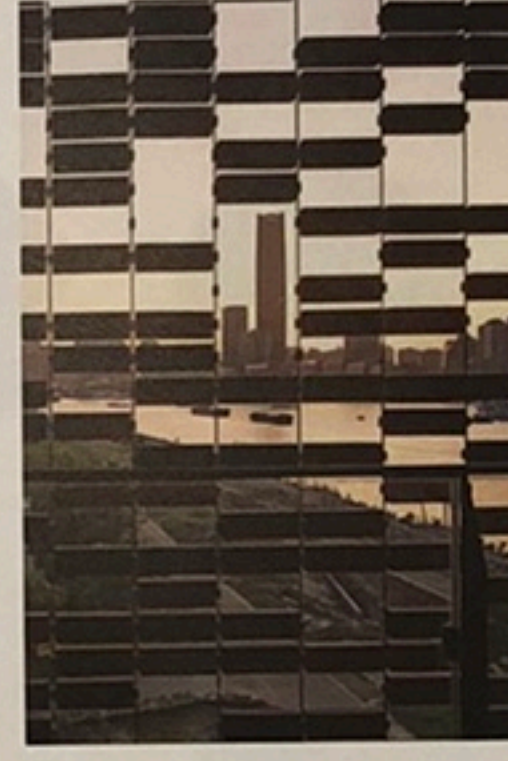
COLORS
Rich
Varied



GEOMETRIC
Abstract
Shapes



DELIBERATE CONTRAST
Bold
Outlined



RHYTHMIC
Syncopation
Repeat



LUMINOSITY
Smooth
Glossy

Give us feedback

How does this capture your vision for JHS?

What should be in this 'remix palette'?

Put your thoughts on sticky notes below.

Add a **BLUE DOT** to indicate images that resonant.

Interactive landmarks that foster experiences that marginalized people have felt

Improvisational that allow exploration of solutions to contemporary issues

TREND
LESS CHAOS
MORE QUIET
LASTING
BUILD ON HISTORY

ELEGANT
NOT
BUSY

CONTEXT OF
WHERE JHS HAS
BEEN/IS/WILL
BE IN THE
LARGER CITY/WORLD

JUSTICE
MUST BE PART OF
THE REMIX

Bold contrasts
& afro centric
Contrasts
Must be
present

JOY

Create openness
while also
providing intimate
and quiet spaces

HONOR

MUSEUM OF DEMOS

Rather than a room, the Museum of Demos could be conceived as series of design landmarks interwoven into the experience of the school. Different types of landmarks could be spread across the school that continue the past and present stories of Jeff, shaping a rich everyday experience of learning by promoting a sense of discovery, exploration, and belonging.

Landmarks could be composed of historical artifacts, interactive exhibits, info graphics or informational display. They can act as markers, art gallery or even be a forum for social interaction. Examples of possible types of landmarks:

Informative landmarks

acting as a springboard of knowledge and a cultural hub for black Portlanders

Interactive landmarks

fostering dialogue and community connections

Improvisational landmarks

creating moments for unexpected inventiveness and spirit that inspire learning



Give us feedback

What are your ideas for the Museum of Demos?

What would you like to see included?

Put your thoughts on sticky notes below.

Dynamic. Changes w/
Time.
Defined by students
changing w/ courses
is by year.

I like the idea
of historical photo
panels as anchors
to inviting sitting and
meeting areas.

Accomplishments
Trophies
Art projects

HISTORIC PHOTOS
TIMELINES
VINTAGE ITEMS

Athletic
Accomplishments
-Dance
accomplishments

YES!
HISTORY MUST BE
KNOWN IN ORDER
TO INFLUENCE THE
FUTURE

AT ONE OF THE
PREVIOUS TOWN
HALL A COMMUNITY
MEMBER SHARED
A LOT OF STORIES & PHOTOS

Public
Face: how
can it be in
and out of
school to connect
to community.

How can you get
current students
to engage / create
as an educational
opportunity?

Add a **BLUE DOT** to indicate images that resonant.

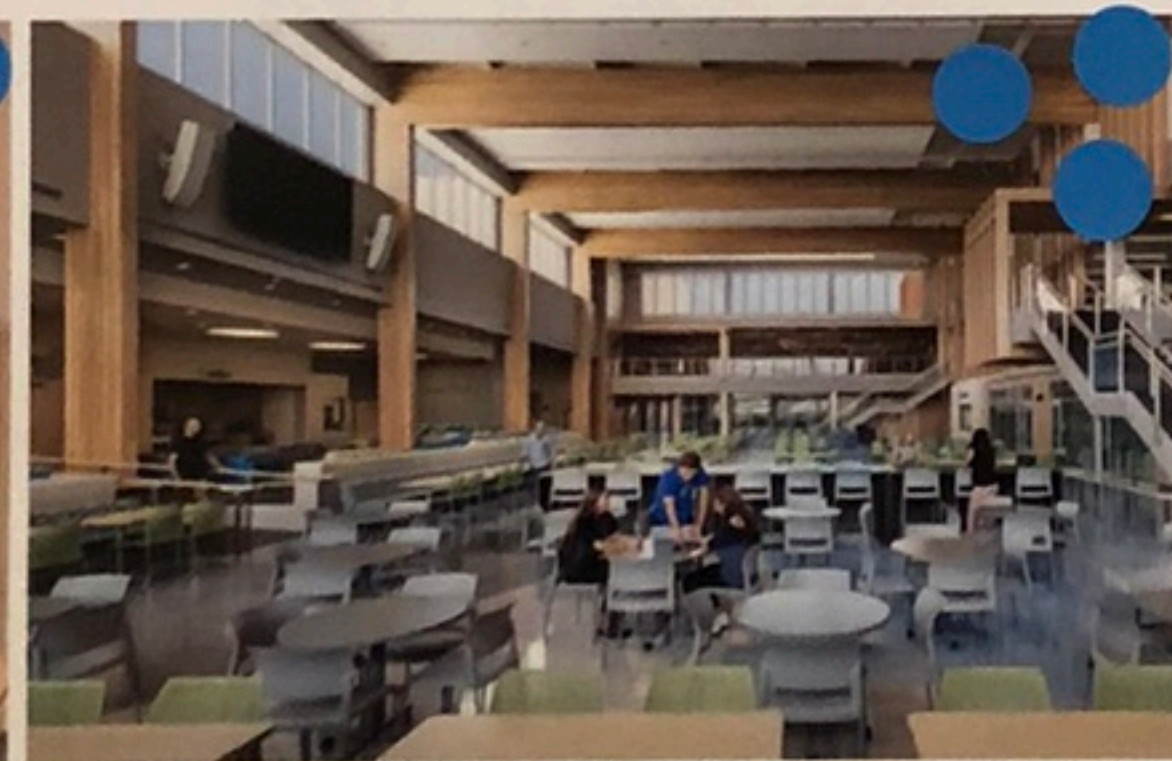
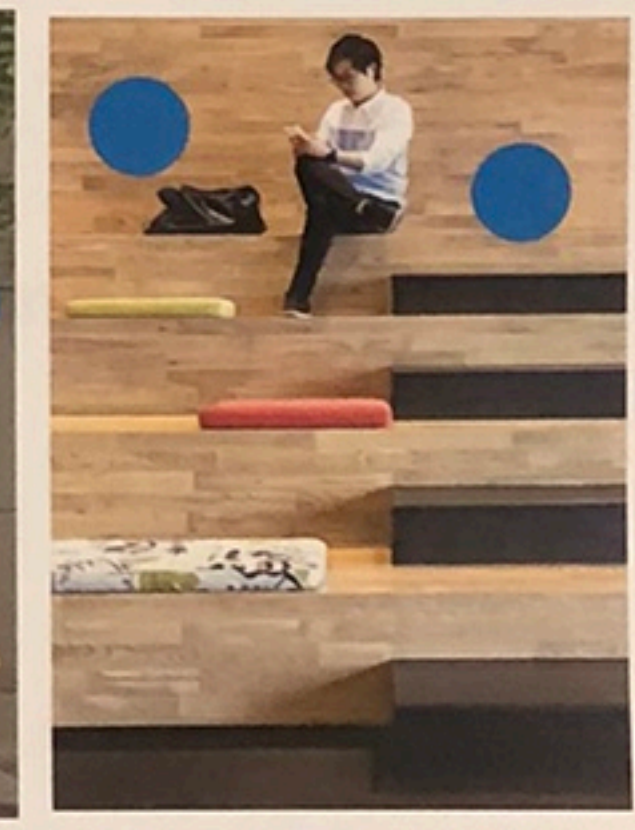
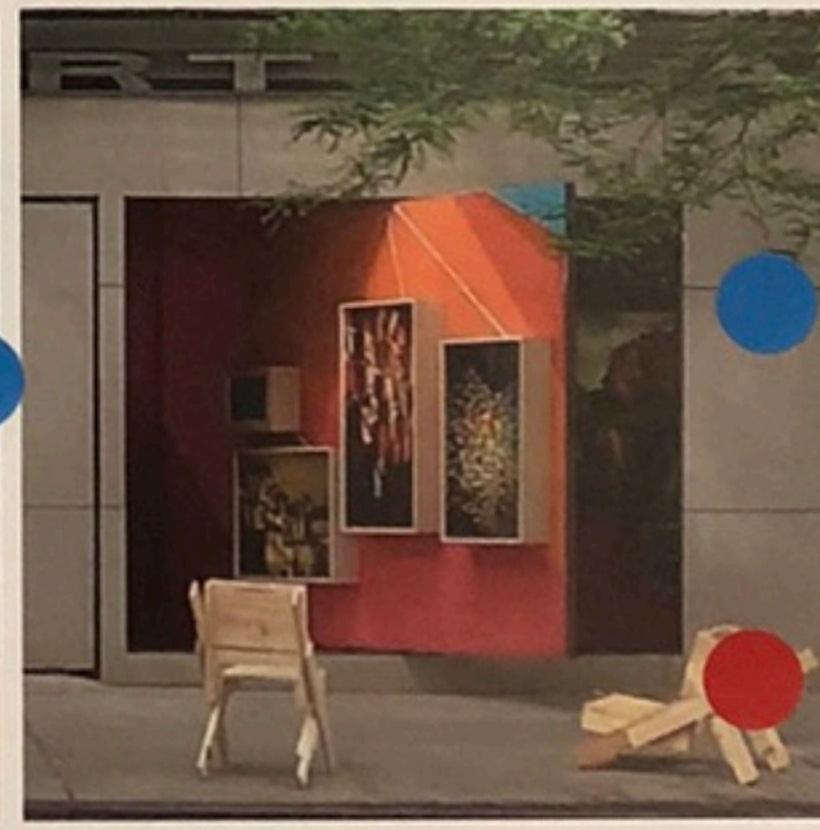
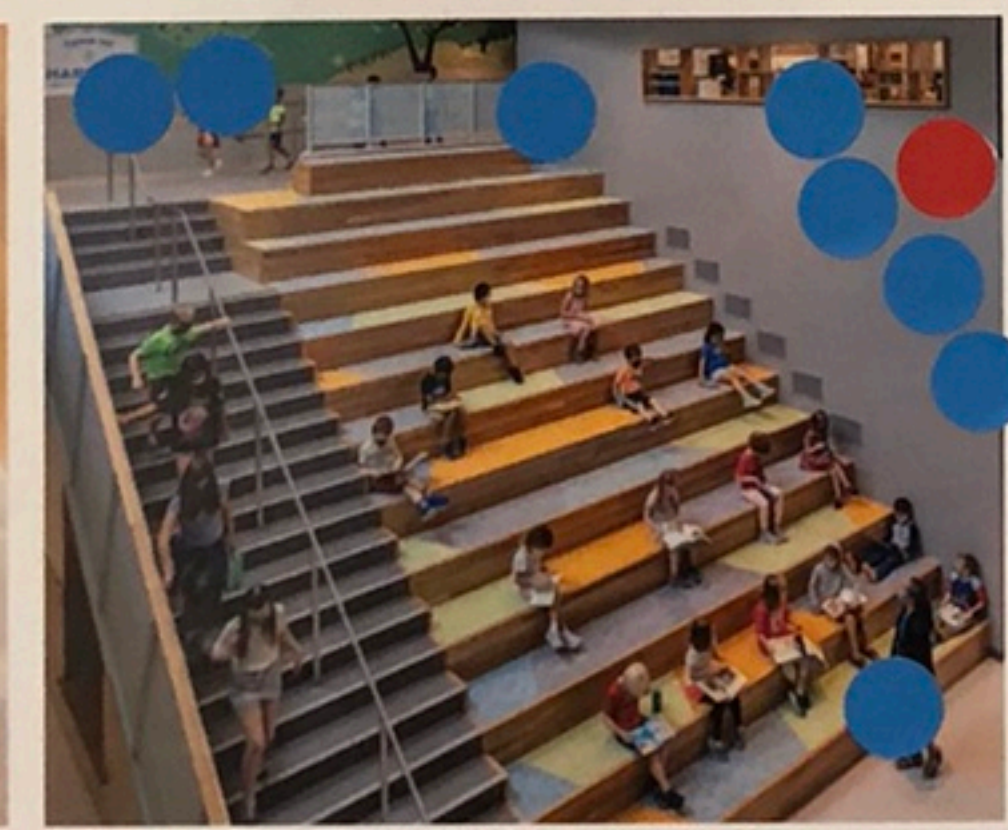
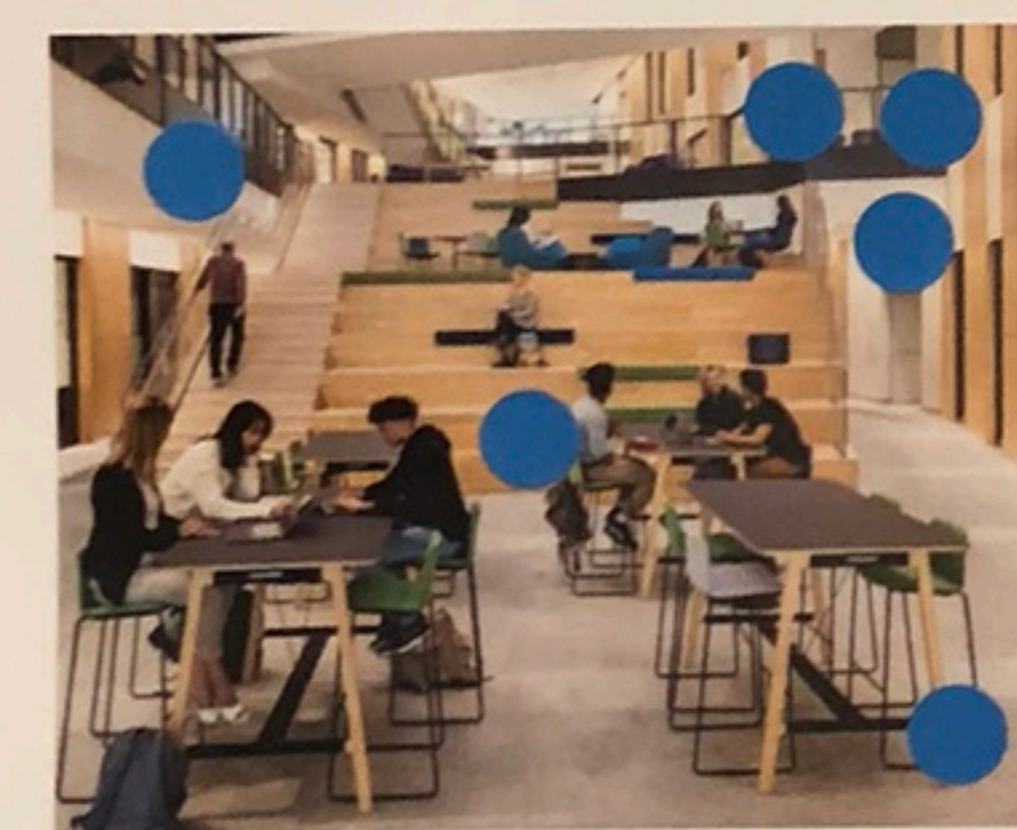
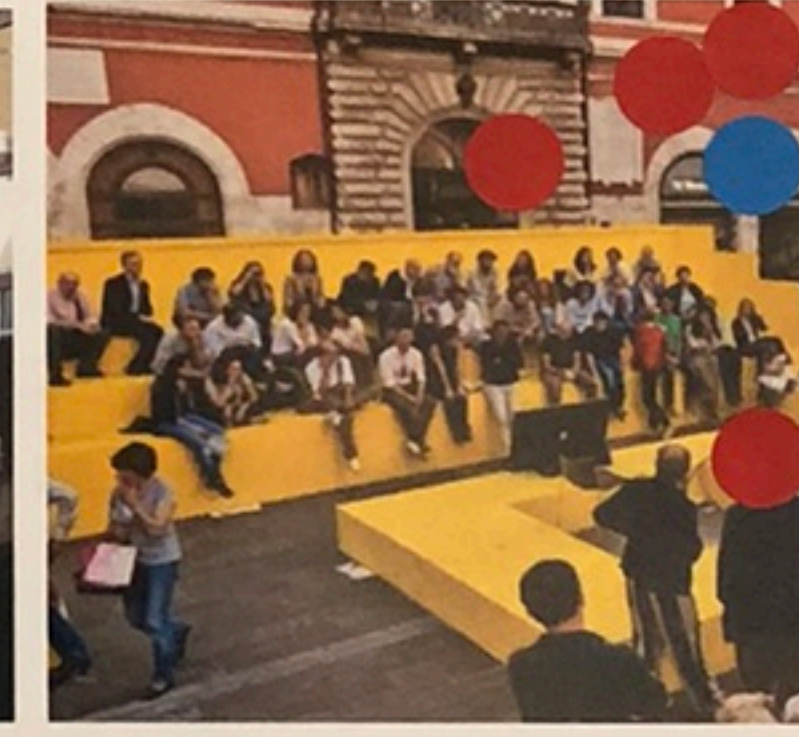
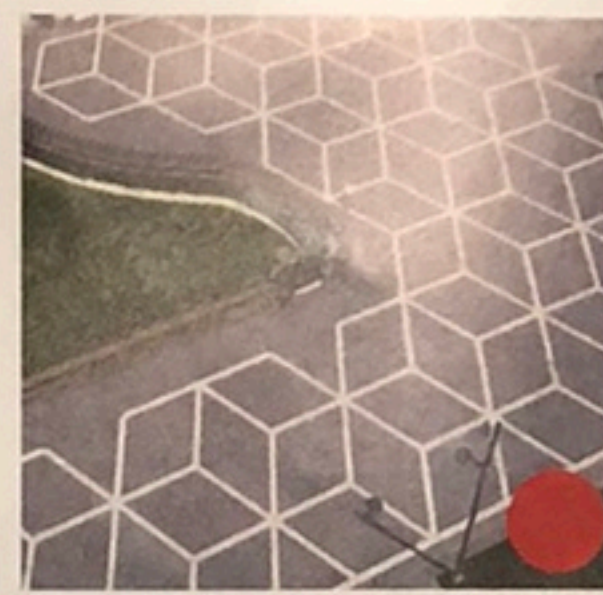
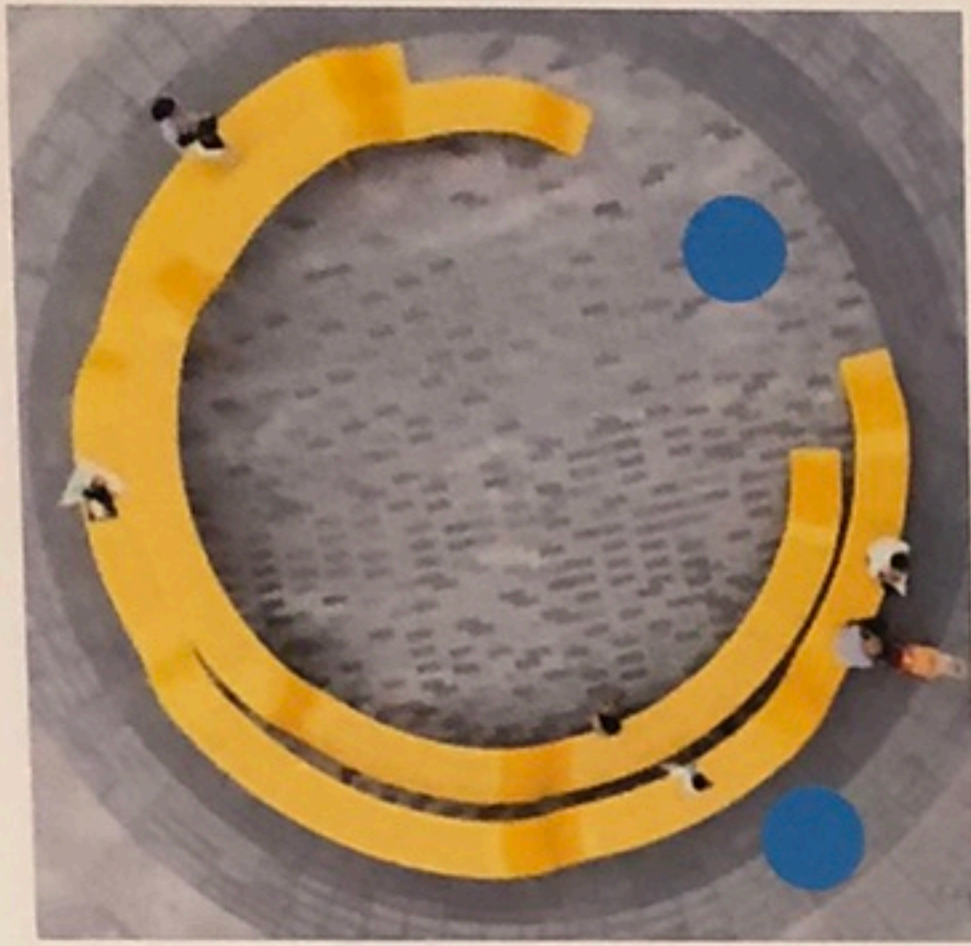
Add a **RED DOT** to indicate images that doesn't resonant.



DESIGN INSPIRATION

Add a **BLUE DOT** to indicate images that resonant.

Add a **RED DOT** to indicate images that doesn't resonant.



BUILDING LOOK MATERIALS AND PROPORTIONS

HOW DO THE NEW BUILDINGS RELATE TO 1909?

How do you think the new buildings should relate to the 1909 building?

Honor the Historic Arch.
Make the contrast between old & new
be the outside Arch. vs. the interior Arch.

WHY
SAVE
1909?
-MURRAY



Midtown High School / Cooper Carry

MATCHEY-
MATCHEY
BUILDINGS

NO
MATCHY
MATCHY

Connected
by Architect-
ural Aesthetics

How does
Tubman
middle fit
in?

Not bolted
on, yet
acknowledging
the new

Outdoor
gathering spaces
are key for
community

Let's celebrate
change and
blending while
honoring what's
been continues.

CONTRASTING/
DIFFERENT
BUILDINGS



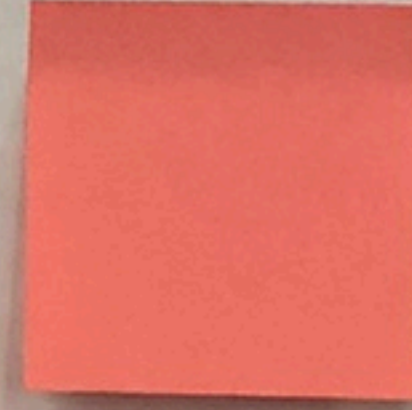
Roosevelt High School / Bassetti Architects



NEW

1909

THE NEW BUILDING HAS SIMILAR PROPORTIONS AND MATERIALS TO THE 1909 BUILDING



Like creating
formal continuity
but forward
looking design.

Put notes here of YOUR vision for
'building look' of Jefferson.

like idea of
blending the
historical presence
of old 1909 bldg
w/ some new
elements
+ more windows
+ light

Pay homage to
past while
moving forward
w/ futuristic look.
Kind of a blend
of old and new.



NEW

1909

THE NEW BUILDING HAS DIFFERENT PROPORTIONS AND MATERIALS THAN THE 1909 BUILDING

ARRIVAL EXPERIENCE BUILDING ENTRIES AND EXTERIOR SPACE

WHAT KIND OF MAIN ENTRY DOES JEFFERSON NEED?

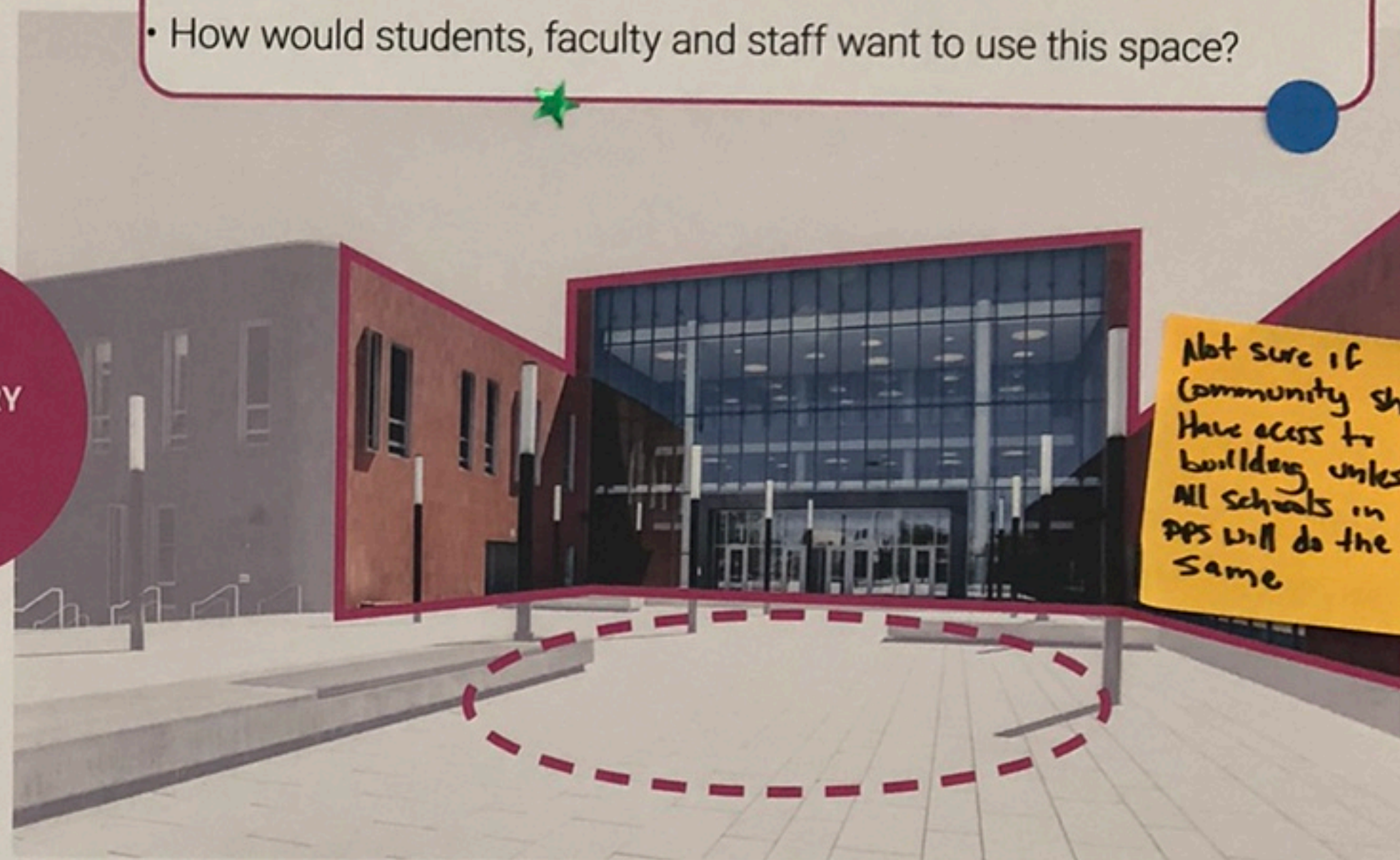
Which images do you like? Which one feels like your future school?

WARM
WELCOMING
CONVEY TO
STUDENTS THAT
THEY IMPROVE

Intuitive
Celebratory

- How much access should the community have to the plaza?
- How would the community want to use this?
- How would students, faculty and staff want to use this space?

OPEN ENTRY
PLAZA



Back of the Yards High School / STL Architects

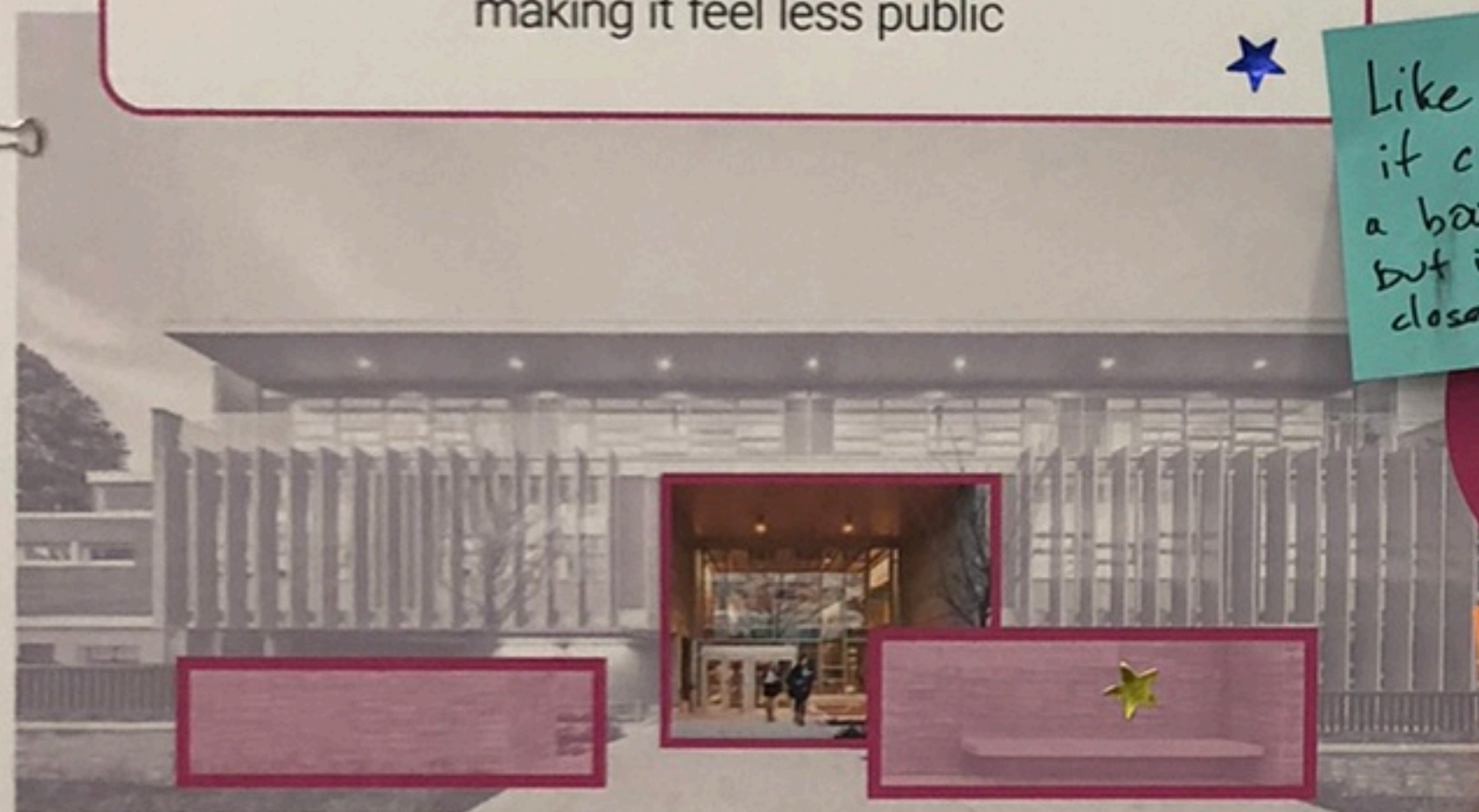
Not sure if
community should
have access to
building unless
all schools in
PPS will do the
same

Low walls or plantings that create a barrier between the sidewalk and the plaza, plaza is set back from the street making it feel less public

Like that
it creates
a boundary
but isn't
closed off.

TRY,
BUT PLAZA IS
SETBACK AWAY
FROM THE
STREET

like the
open plaza
but still not
completely open from
street & creates
safe space



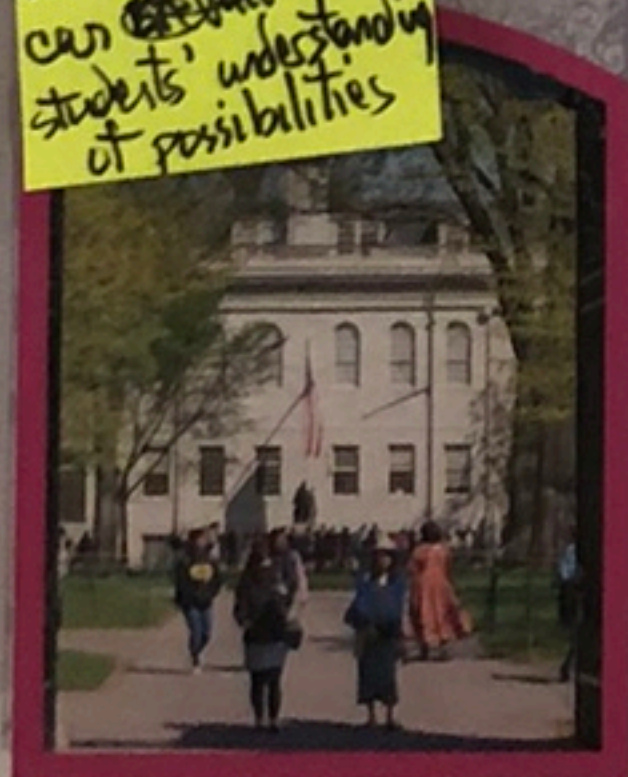
York House School / Acton Ostry Architects

Welcoming
Fav*

I don't know where to put this...
TRANSPORTATION
HOUSING
BELONGING

How can
these 3 things
support the
student experience
in success & also
being a kid.

High Entry
reminiscent of
college which
can elevate
students' understanding
of possibilities



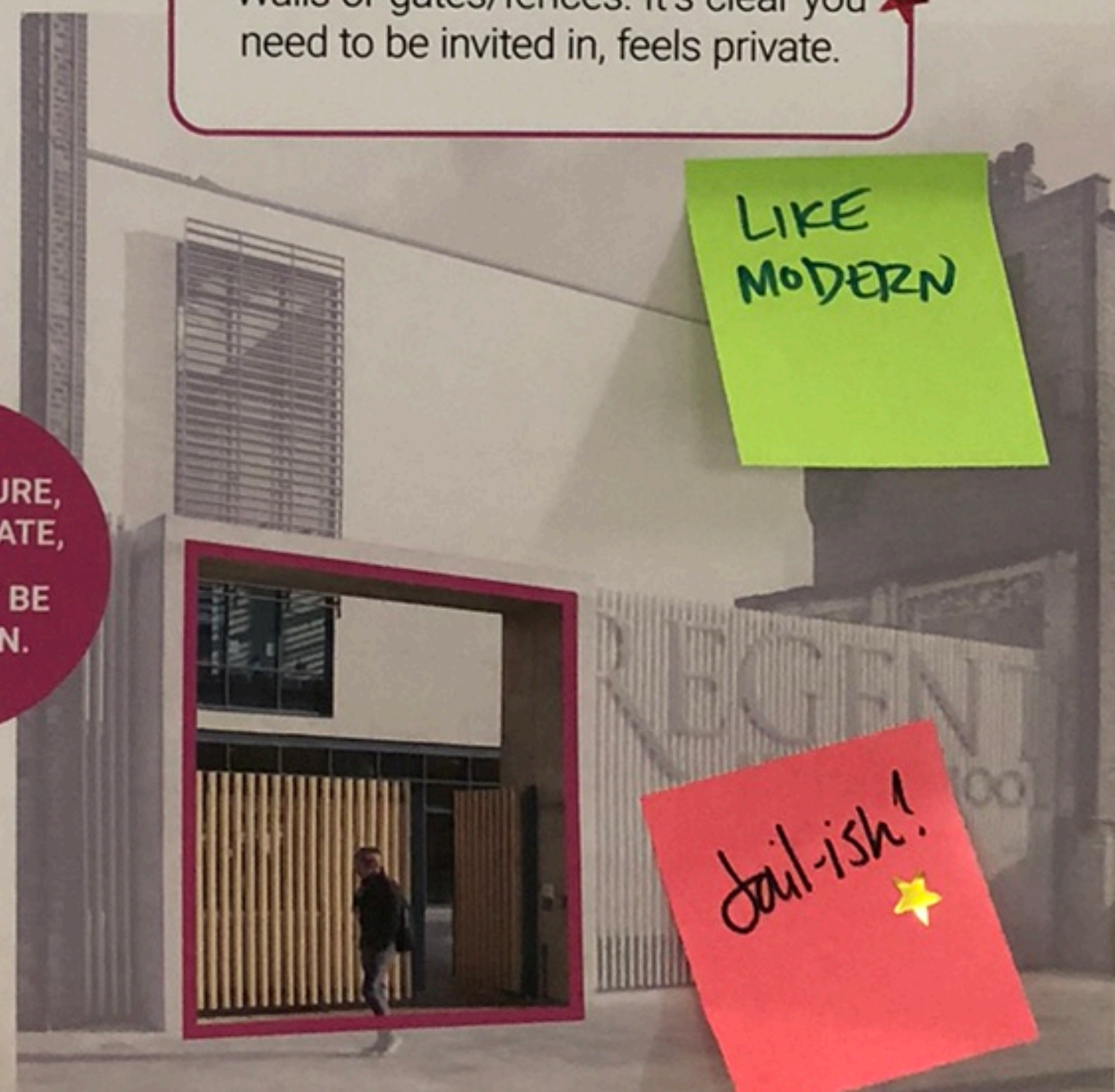
Harvard Yard Gates / Harvard University

college-vibe
but too
high
closed off

MORE SECURE,
MORE PRIVATE,
YOU MUST BE
INVITED IN.

Walls or gates/fences. It's clear you need to be invited in, feels private.

LIKE
MODERN



Regents High School / Walters & Cohen

fail-ish!

SITE PLAN



How does Jeff connect to PCC?

DEDICATION WHY PARKING? OPEN SPACE?

MAKE THIS THE MAIN ENTRY

REPROGRAM BOLD CIRCULATION TO MAKE THIS THE MAIN ENTRY CIRCULATION IS USABLE OUTDOOR SPACE. THIS ENTRY IS MUCH SAFER AS IT IS MORE VISIBLE, OPEN, CLEAR SIDE WALKS, ETC.

BUILD HERE

Revisit Planning & keep existing bldg in tact. So all programs remain during construction. Keeping an efficient site layout is important for climate goals & sustainability. Need to maximize outdoor space for activities & transit/bike spaces.

Does it make sense to have main entrance facing houses vs. commercial street?

Whichever No synthetic grass - What are we teaching students about climate

MAKE BUILDING TALLER TO REDUCE FOOTPRINT, GEAR ROOM FOR PLAYING FIELDS

where is space for other sports Soccer/basketball/sports

WHERE IS THE VARSITY BASEBALL GOING TO PLAY THEIR GAMES?

Back field south of Alberta:
1- safer crossing
2- fence in area to protect field from dumping, dog poop park, nighttime occupancy
3- provide smaller gated area for dogs
4- gate the new parking area
Let's protect the field to have it used for sports!

DOG PARK CURRENTLY. LOTS OF POOP UNDERUTILIZED WOULD LIKE TO SEE IT BETTER USED BY JEFF

Flashing light @ crosswalk on Alberta



0' 100' 200'

1909 NORTH ENTRY

SAVE THE TREE
MAKE IT PART
OF THE ENTRY
EXPERIENCE



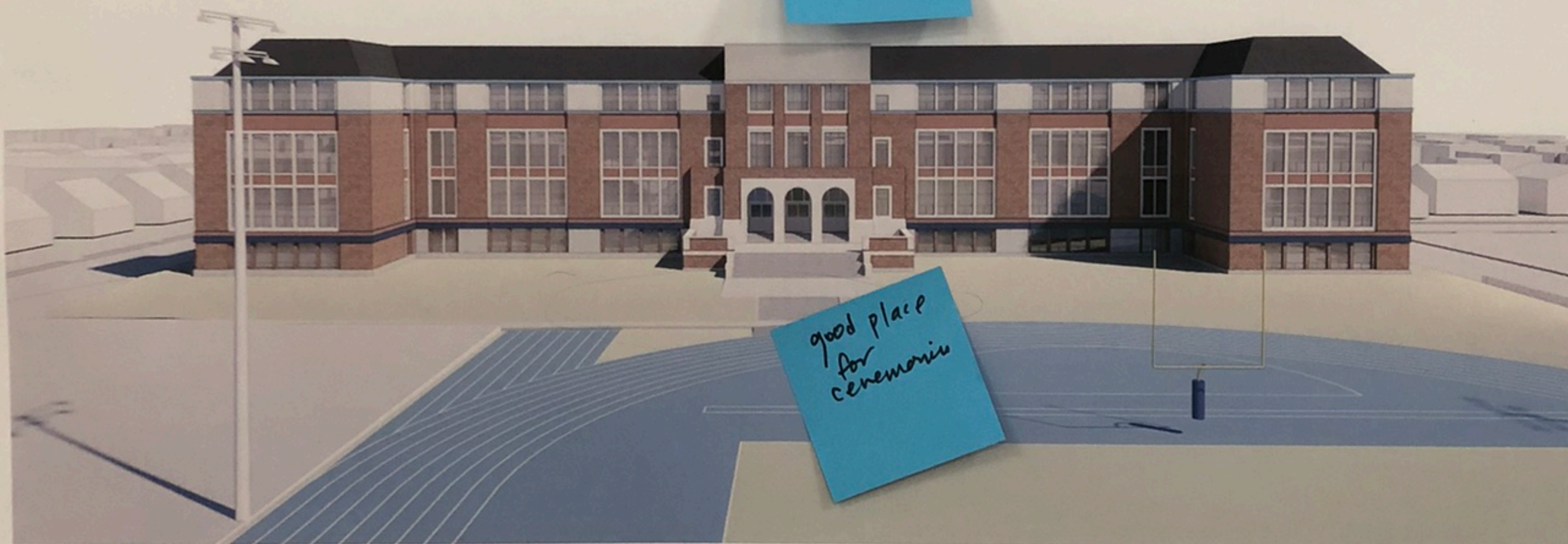
NORTH ENTRY TODAY

tree dead
in 5 years
if moved



HISTORIC POSTCARD OF 1909 BUILDING

Make
tree
part of
the experience



EXISTING NORTH ELEVATION

good place
for
ceremonies

HOW DO WE RETHINK THE NORTH ENTRY?

like the
Ramps at
Bainbridge Park
Rose garden



FUTURE NORTH ENTRY

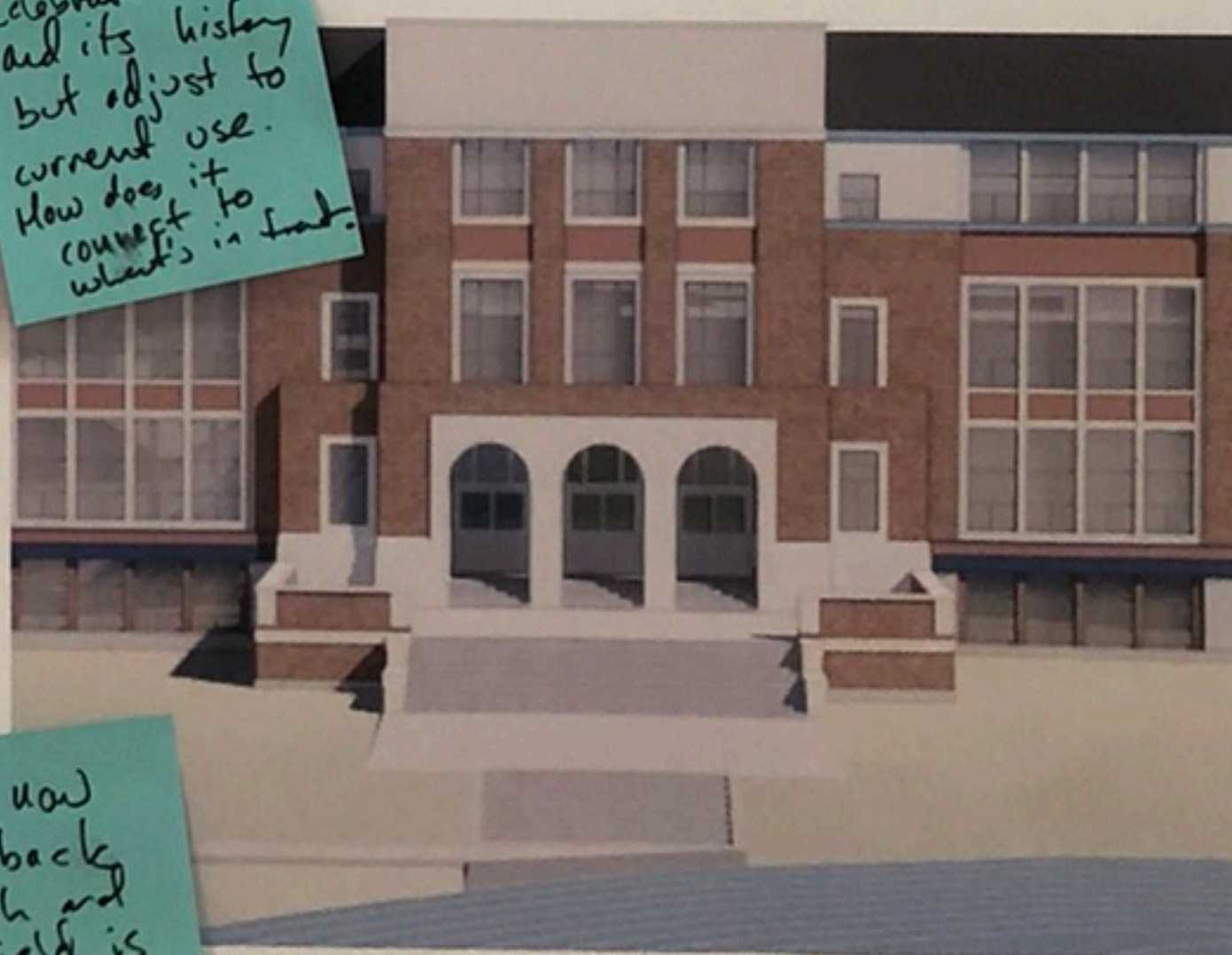
Must be
ADA accessible
wheelchair
&
walkers

Celebrate it
and its history
but adjust to
current use.
How does it
connect to
what's in front?

A yes!

line
w/
trees?

Is it now
the back
porch and
the field is
the yard?



FUTURE NORTH ENTRY

SPORTS



MULTI-SPORT PRACTICE FIELD



ADDITIONAL ATHLETIC FACILITIES



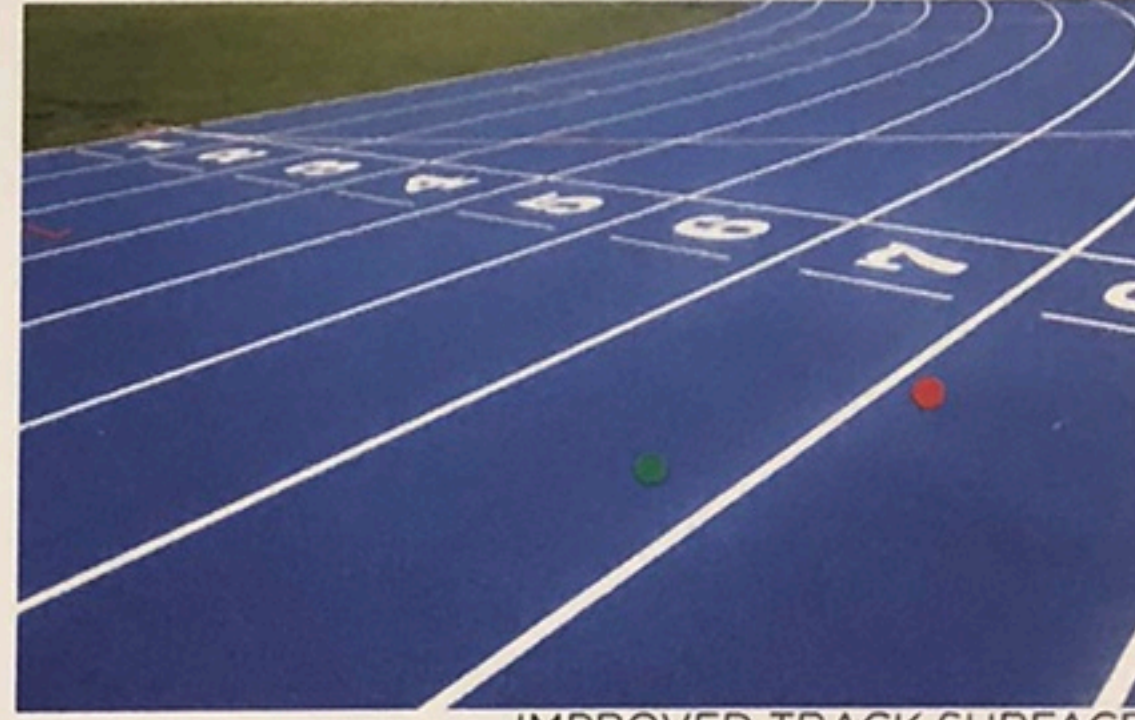
GRAND STAND



IMPROVED FIELD SPORTS



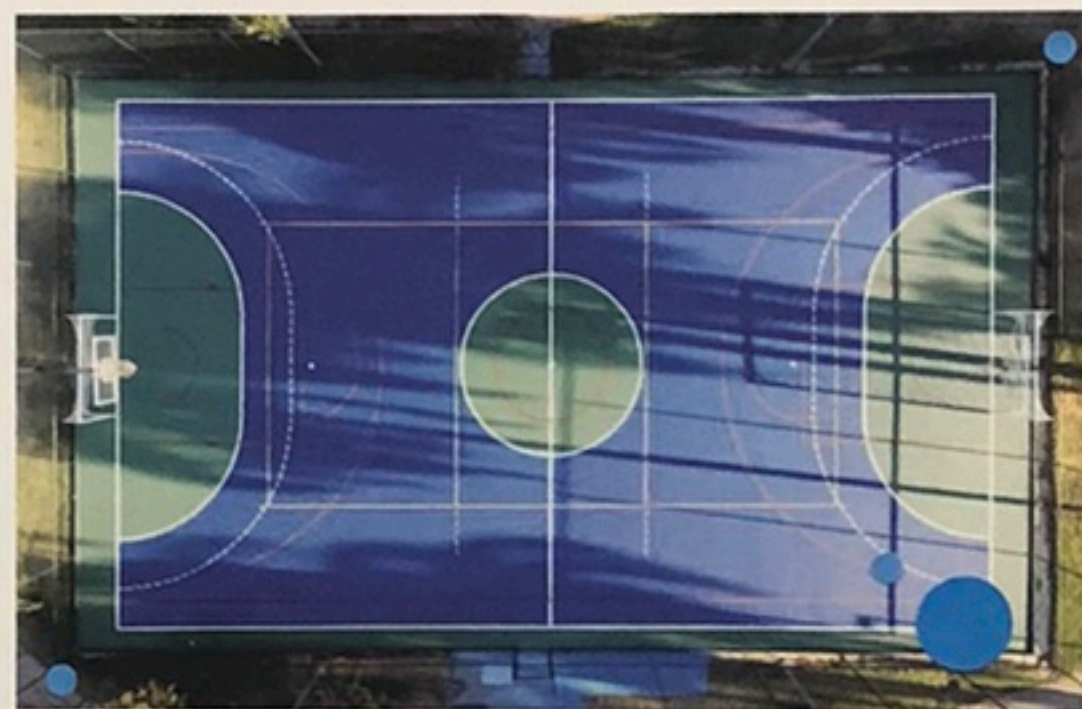
MULTI-SPORT PRACTICE FIELD



IMPROVED TRACK SURFACE



MULTI-PURPOSE PRACTICE FIELDS



MULTI-SPORT COURTS



IMPROVED FIELD SPORTS

Not appreciating synthetic grass. How does it square with climate change?

SPACES FOR SUPPORTERS?
- CONCESSIONS
- BATHROOMS
- GATHERING SPACE

Where is the pool?

Reinvision
Locker room
experience
Can they be gender neutral?

There is a pool?
Swim team
life guards
community swim lessons taught by high school students?



MASCOT LOCATIONS



MURAL & IDENTITY



DEMOCRAT COLORS



ENTRY IDENTITY

I like entry identity

Athletics brings community on to the campus. i field can be used to host invitational meets & showcase games. These events make it for programs and bring students, parents, families from across the city together at Jefferson.
-Eric Saunders

STUDENT SPACE

Not loving the colorful furniture. Maybe demos colors?

MATERIAL THAT DOES NOT FADE/WEATHER
SOFT SHAPES LONG LINES

More outdoor spaces for learning

Covered space for gathering in weather?

How to accommodate year round use?



COLORFUL FURNITURE



OUTDOOR SPACE



SEATING OPTIONS



PLAY WITH PAVING



ENTRY PLAZA



GATHERING OPTIONS



COURT



SEATING OPTIONS

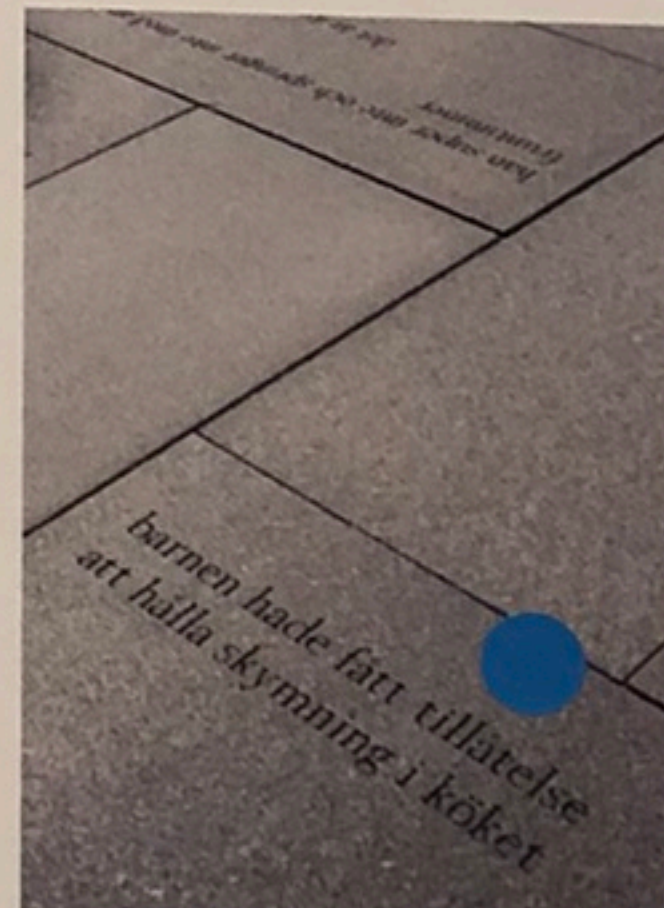


PLAY WITH PAVING

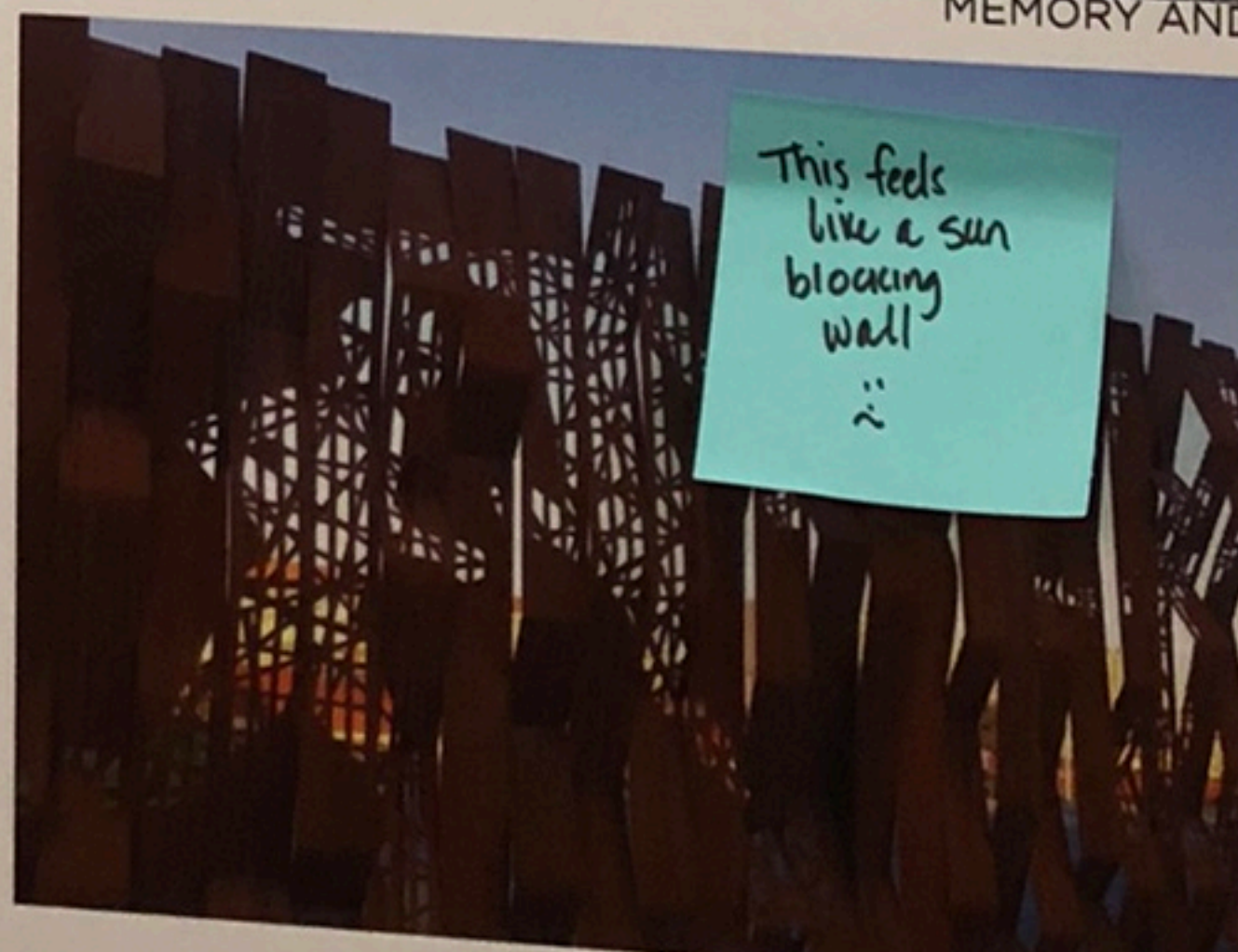
MEMORY AND COMMUNIT



COMMUNITY SPACES



MEMORY AND TIMELINES IN THE LANDSCAPE



COMMUNITY ART



MARKERS

This feels like a sun blocking wall