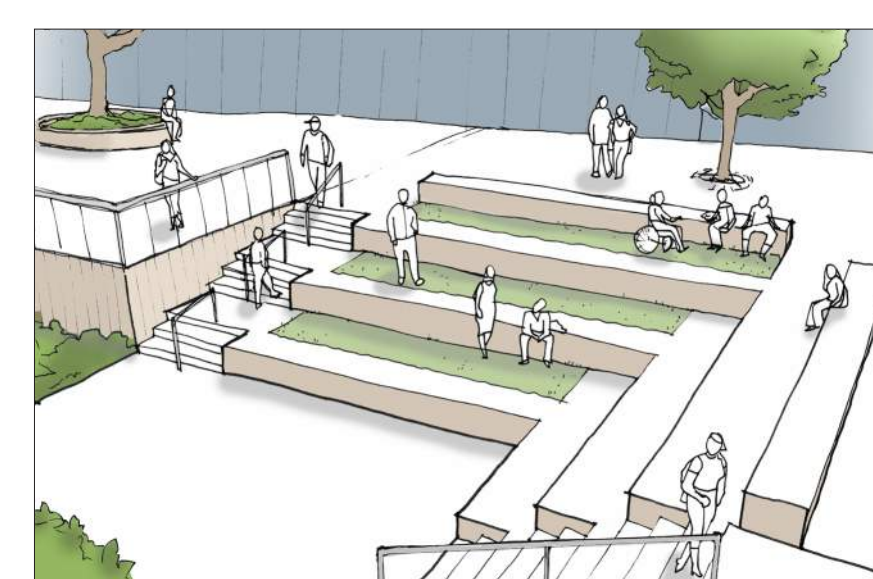


Courtyard Plan

Does the balance between green (planting) and white (paving/seating) feel right?

Does the gathering space variety (quantities, sizes) feel right?

Which space would you feel excited to hang out in? Why?



Courtyard Imagery

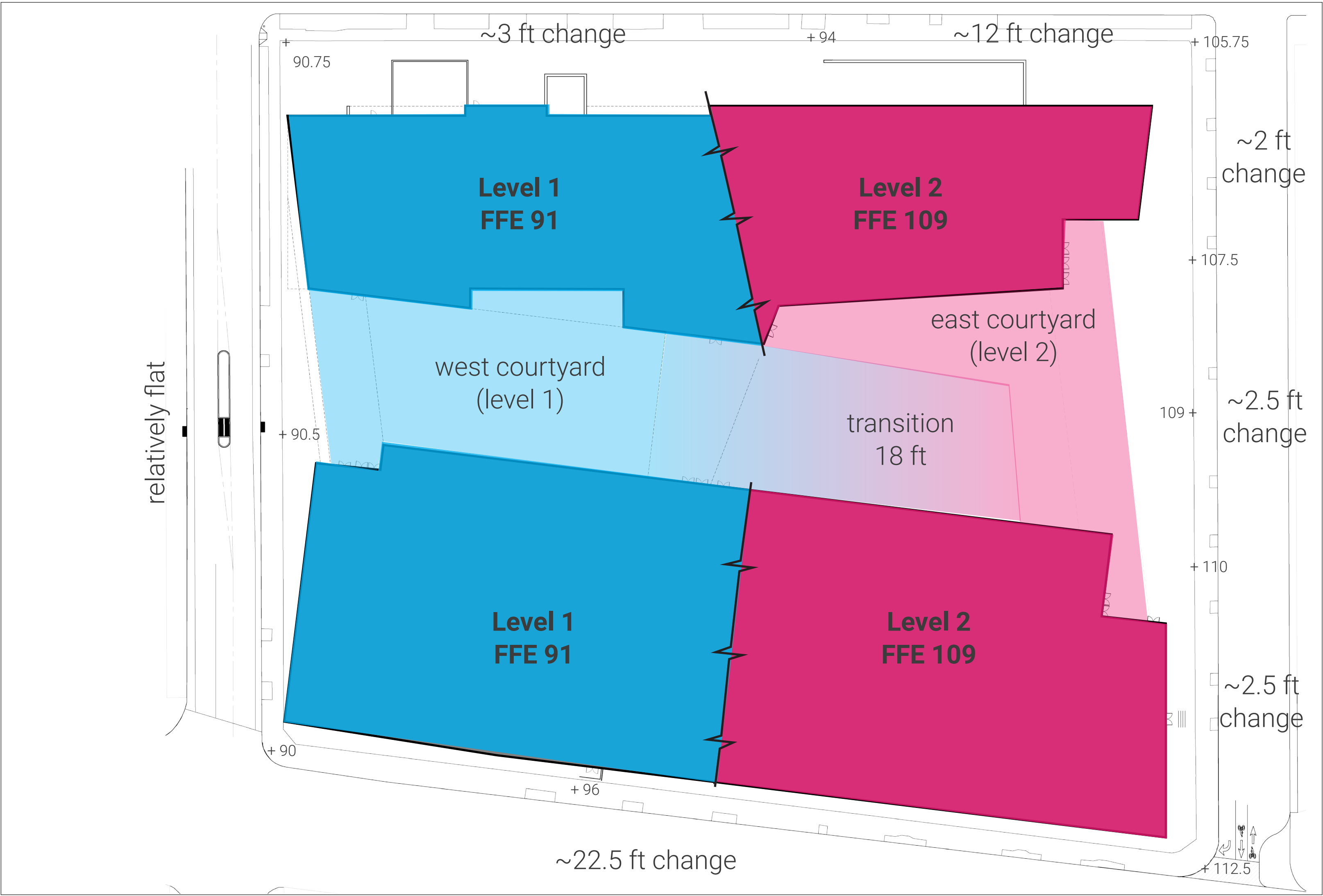


Diagram - Building Levels and Site Elevations

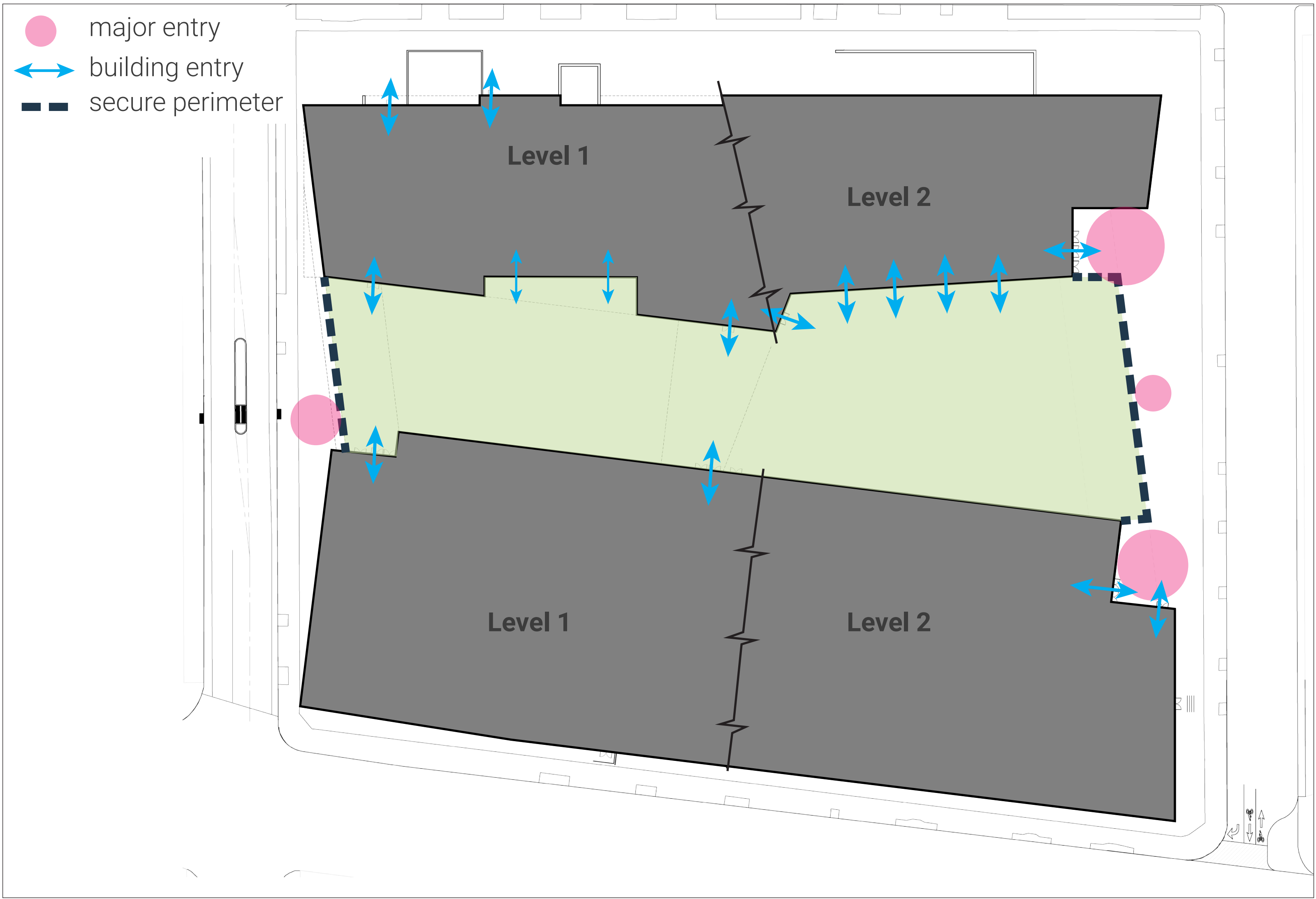


Diagram - Entries and Perimeter Control

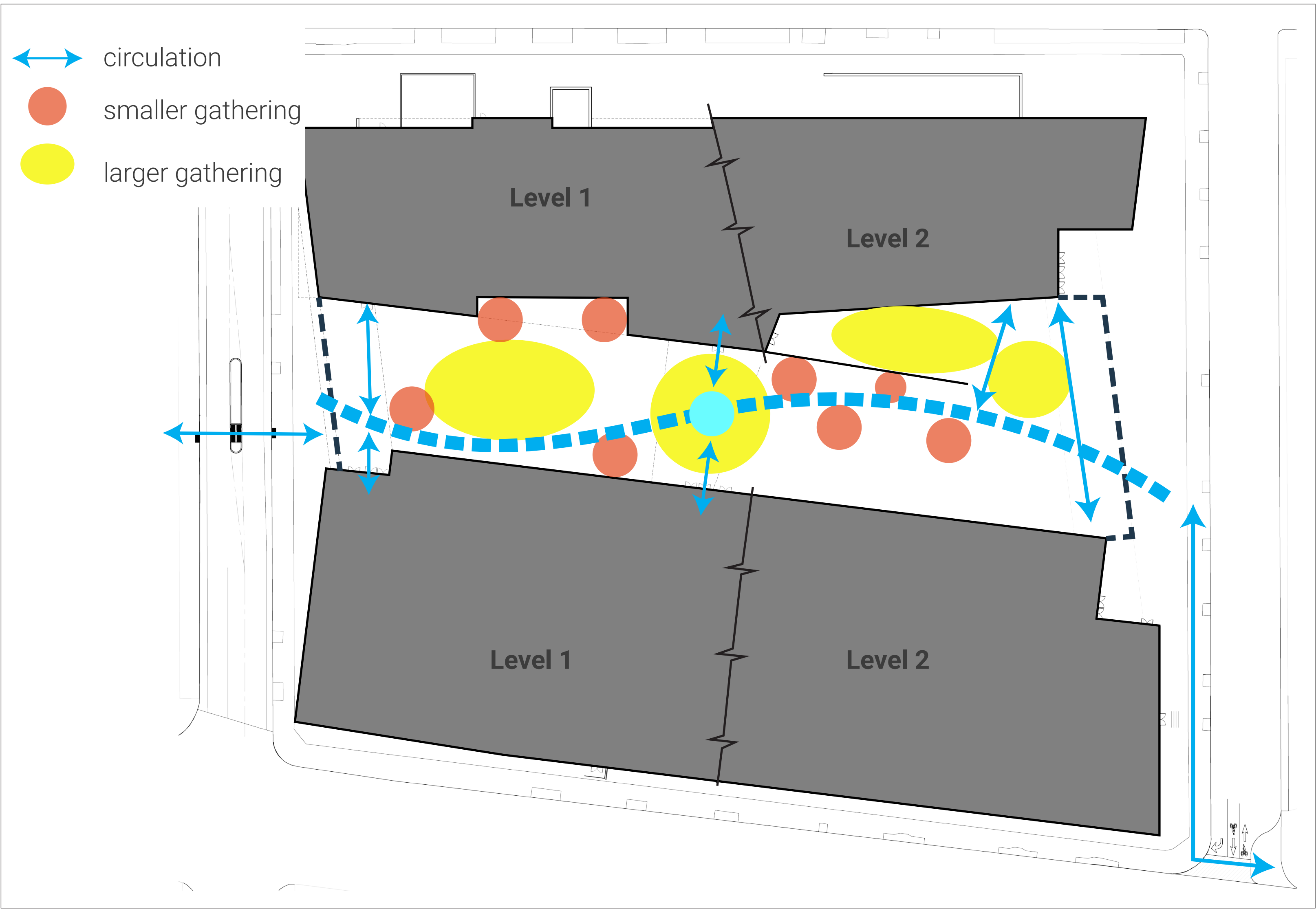
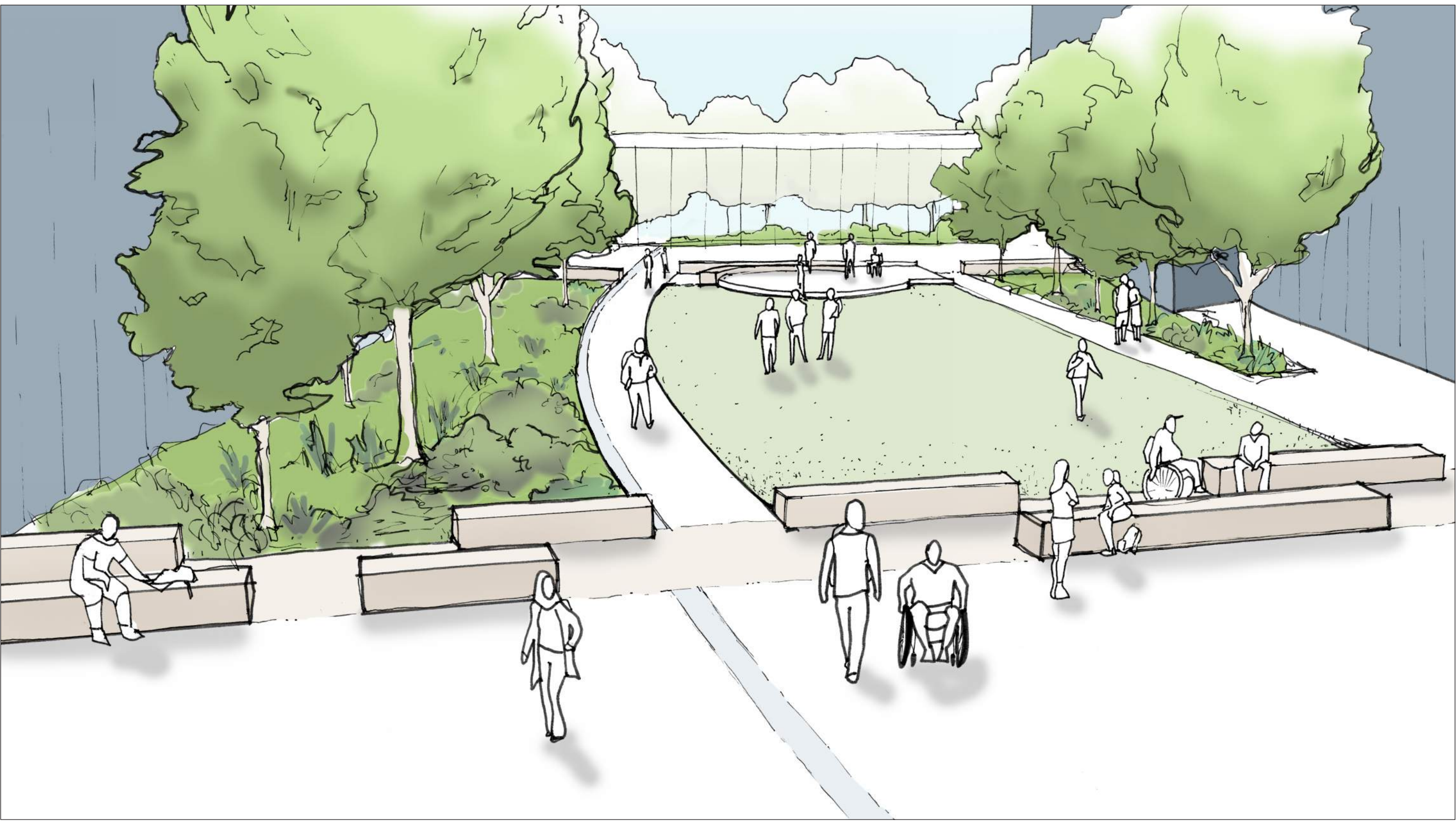


Diagram - Flow and Eddies



Proposed Site Plan



Perspective Sketch - East Courtyard



Perspective Sketch - West Courtyard



Precedent Imagery - Woodland Stream

Level 2



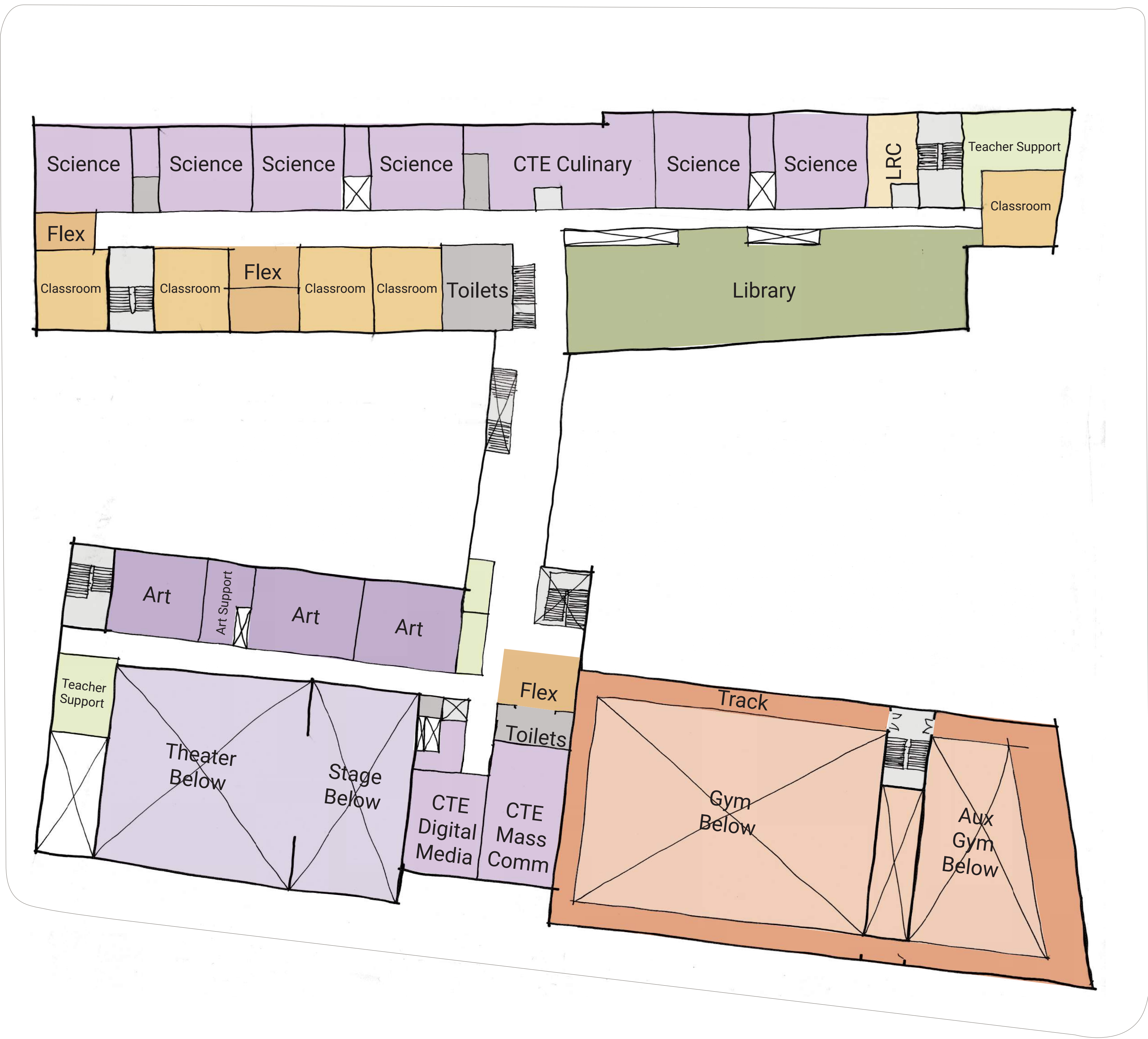
Level 1



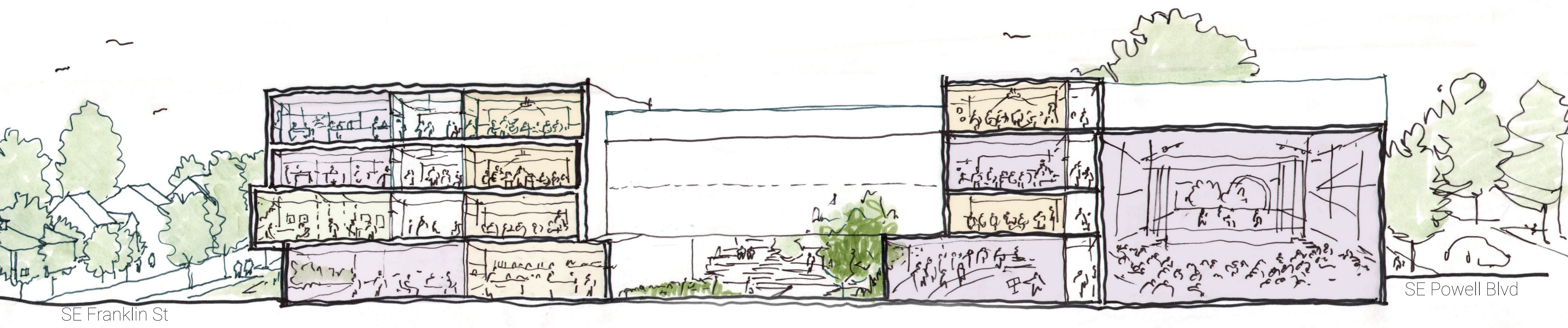
Level 4



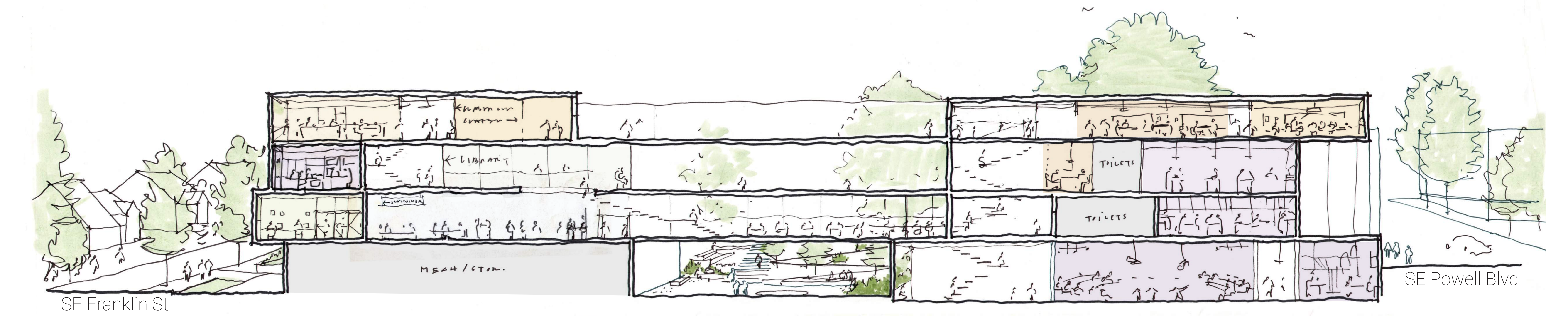
Level 3



Section 1 at Theater



Section 2 at Bridge



Section 3 at Gym

