

Jefferson High School Modernization

Community Information Session



PORTLAND
Public Schools

BORA LEVER PLACE

May 7, 2025

Agenda

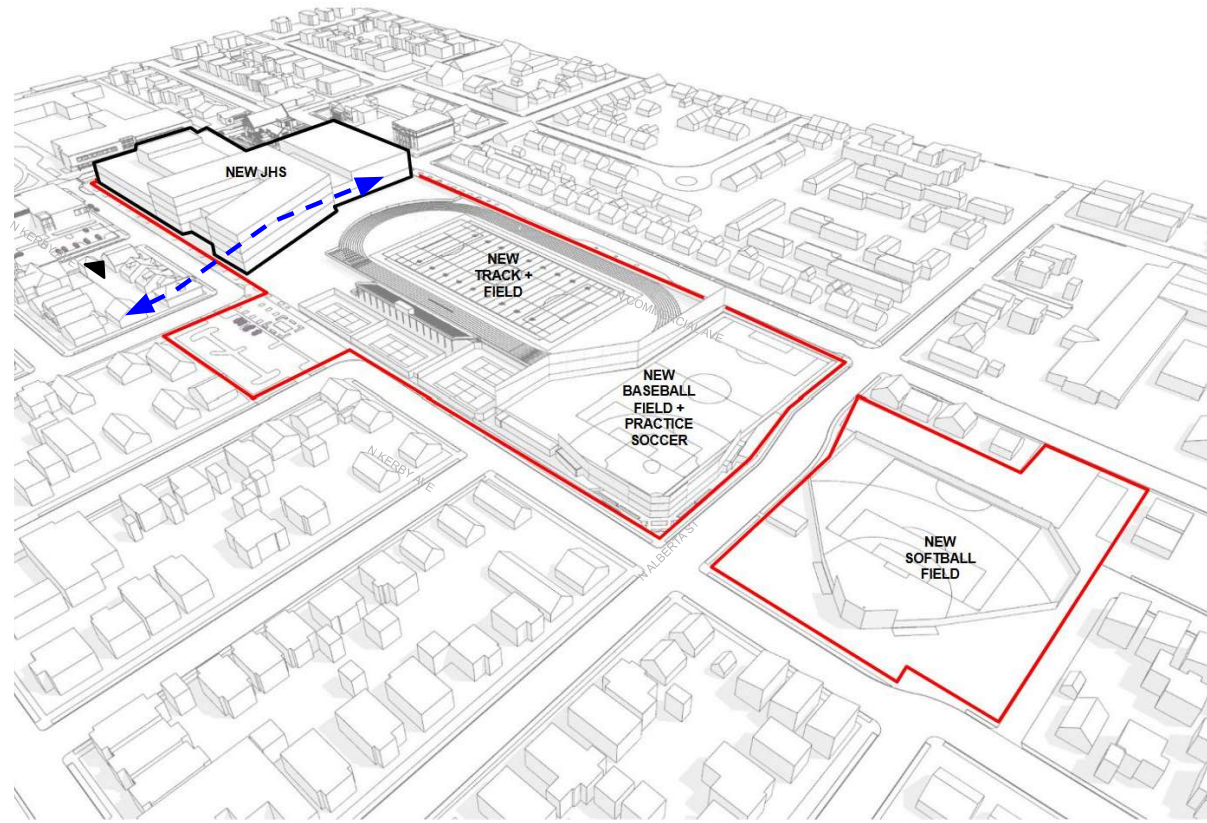
- Welcome from Principal Shelton
- Remarks from Dr. Armstrong
- Modernization Update
- Engagement Schedule
- Feedback/Questions



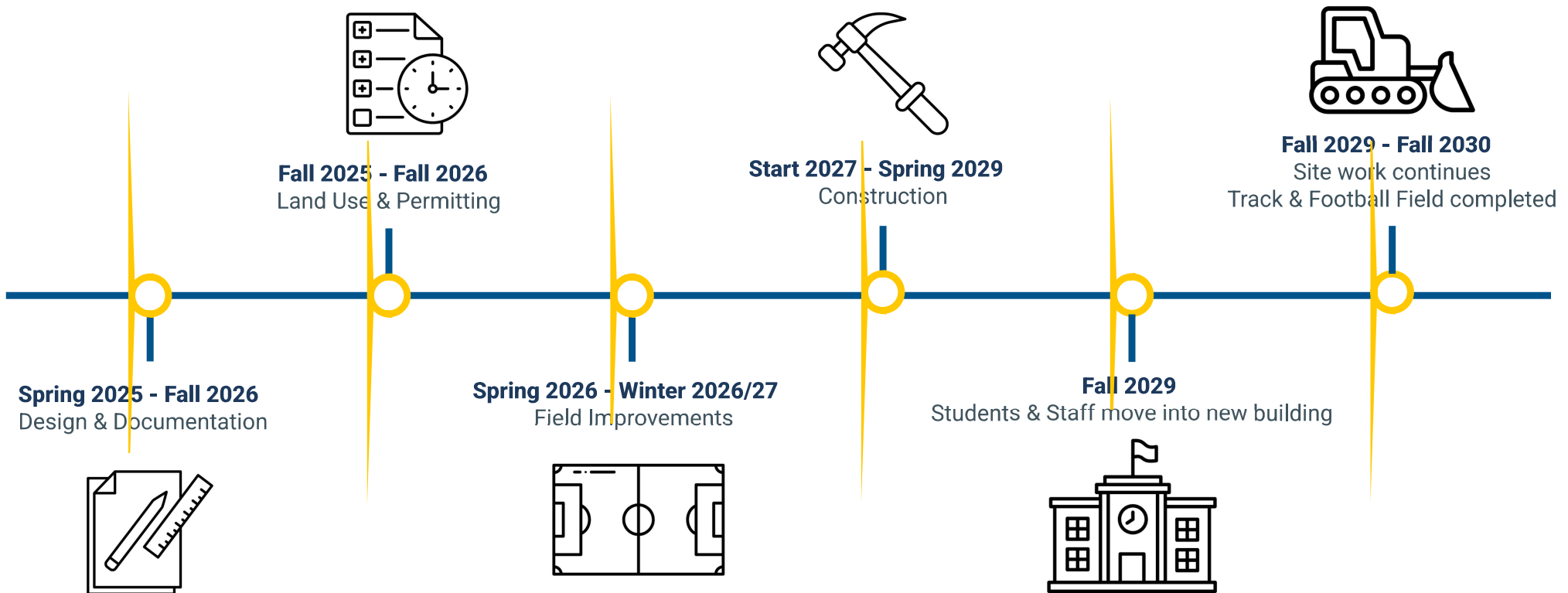
Current Design Strategy

Project will maintain:

- Students will stay on-site during construction
- 1700-student capacity
- Building stays on the North
- Main Entry stays on Kerby
- Athletic Fields remain as designed
- Maintain relationship of Athletics/Gym next to fields on Commercial
- Activating Killingsworth
- Crossblock connection required
- Alignment with community priorities



Jefferson Modernization Schedule



JHS Modernization Phasing

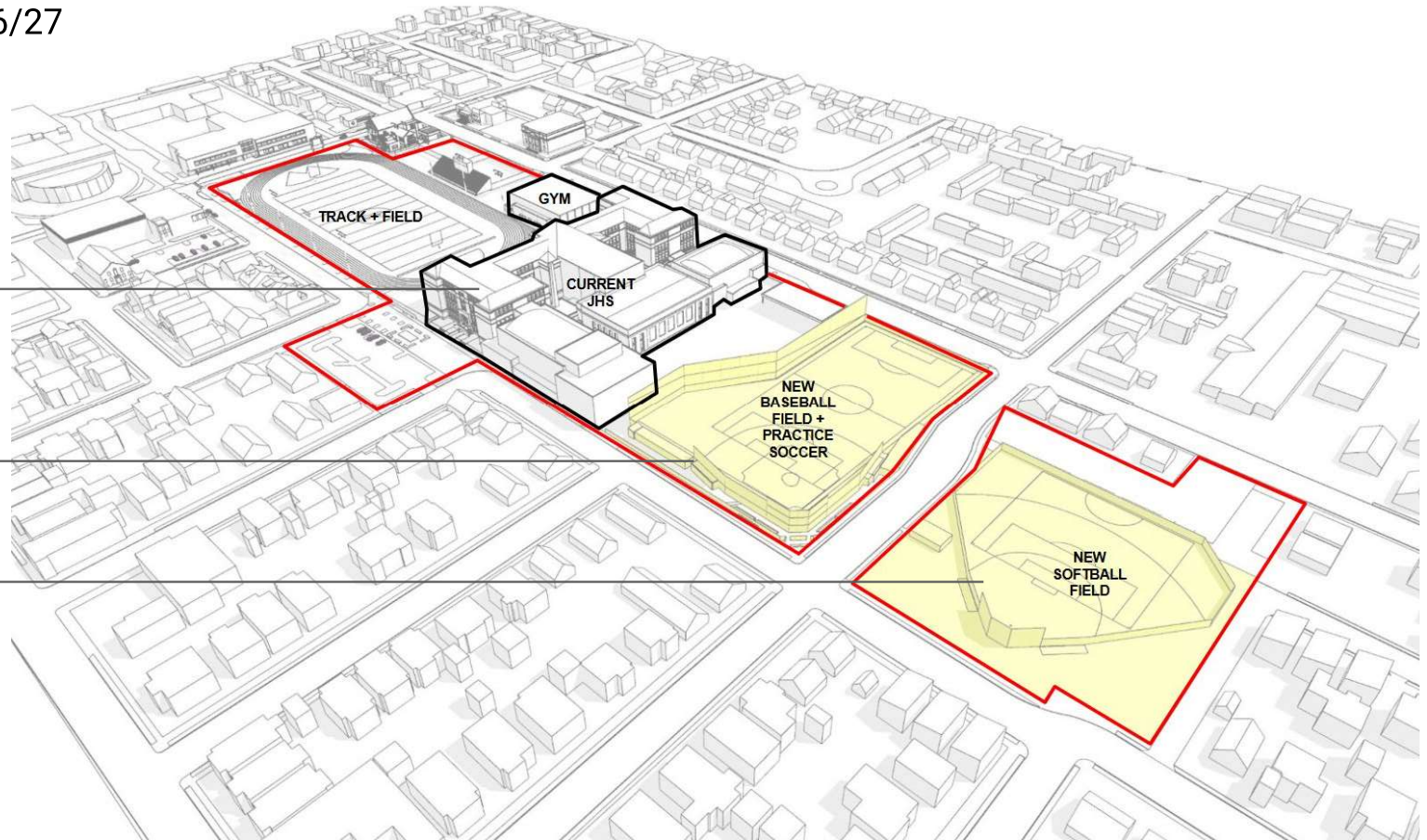
Early Fields Construction

Spring 2026 - Winter 2026/27

STUDENTS STAY ON SITE

**BUILD NEW BASEBALL &
PRACTICE SOCCER FIELDS**

**BUILD NEW SOFTBALL
FIELD**



JHS Modernization Phasing

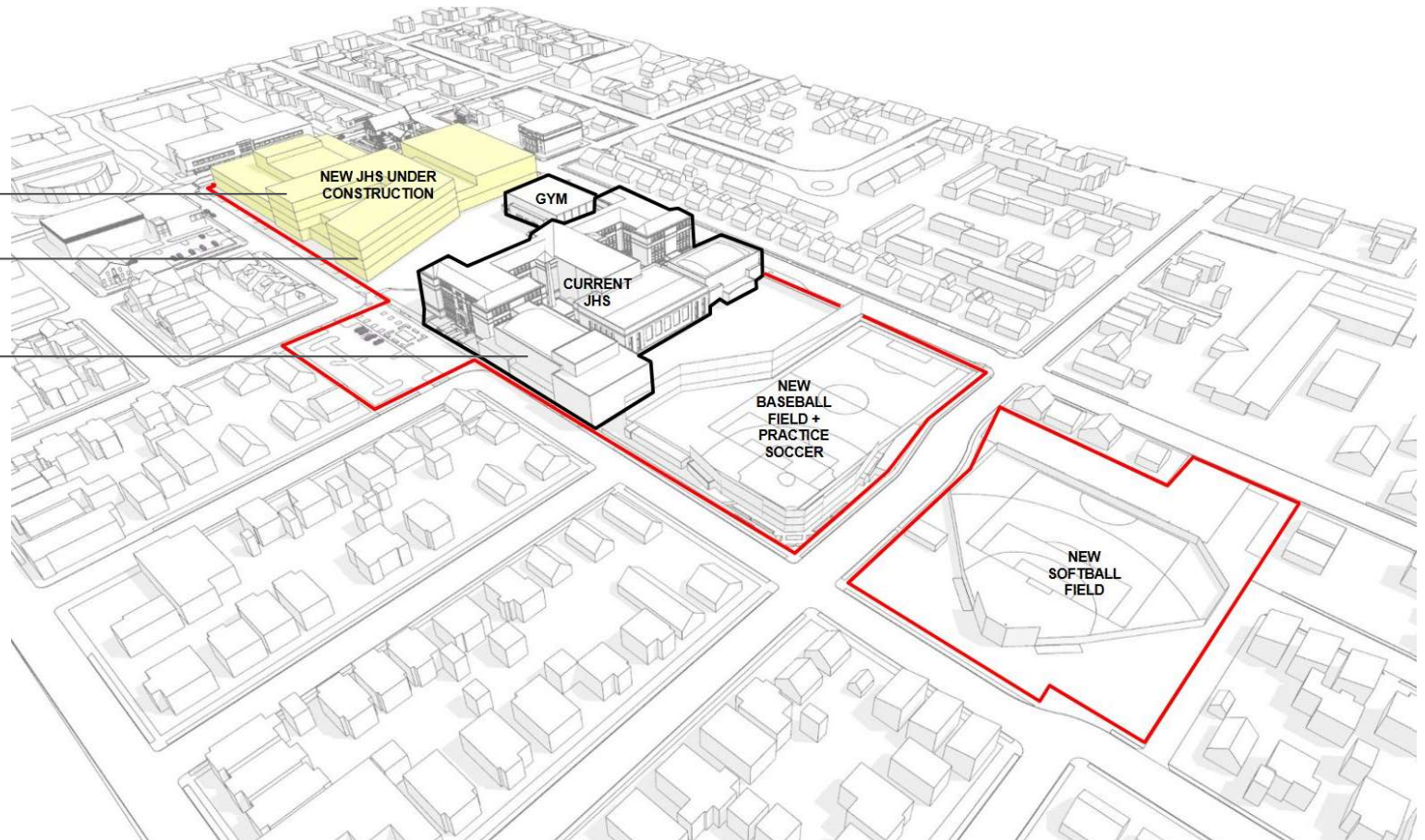
New Building Construction

Start 2027 - Spring 2029

**DEMOLISH EXISTING
TRACK & FIELD**

BUILD NEW JHS

**STUDENTS STAY ON
SITE**



JHS Modernization Phasing

Remaining Fields Construction

Fall 2029 - Fall 2030

MOVE IN TO NEW JHS!

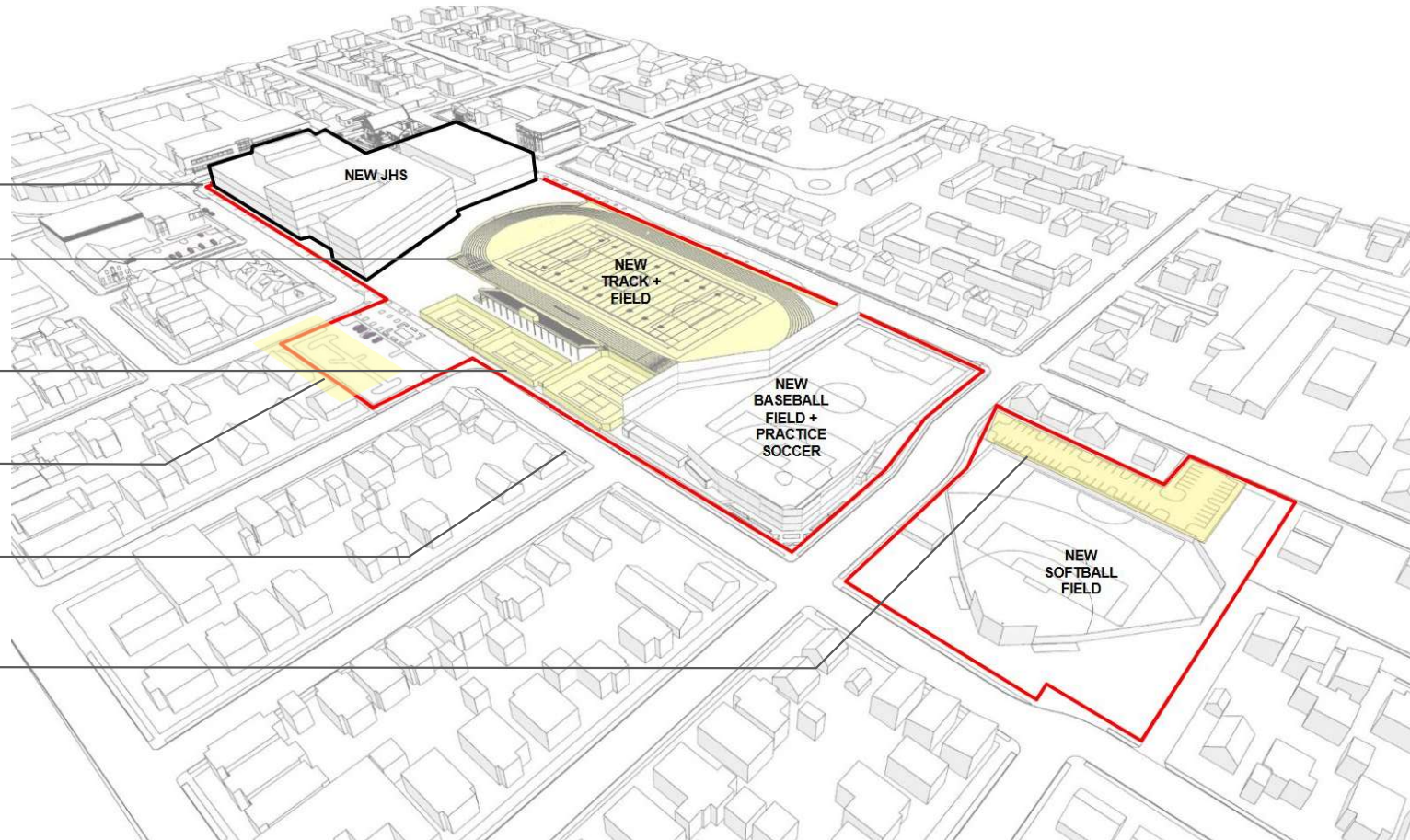
DEMOLISH EXISTING JHS

**BUILD NEW TRACK & FIELD
WITH NEW GRANDSTAND**

**PARKING LOT
IMPROVEMENTS**

BUILD NEW TENNIS COURTS

BUILD NEW PARKING LOT



Building Program Adjustments

Program adjustments made to align with district Ed Specs. Reduced or removed programs not included or listed as "Optional" in Ed Specs.

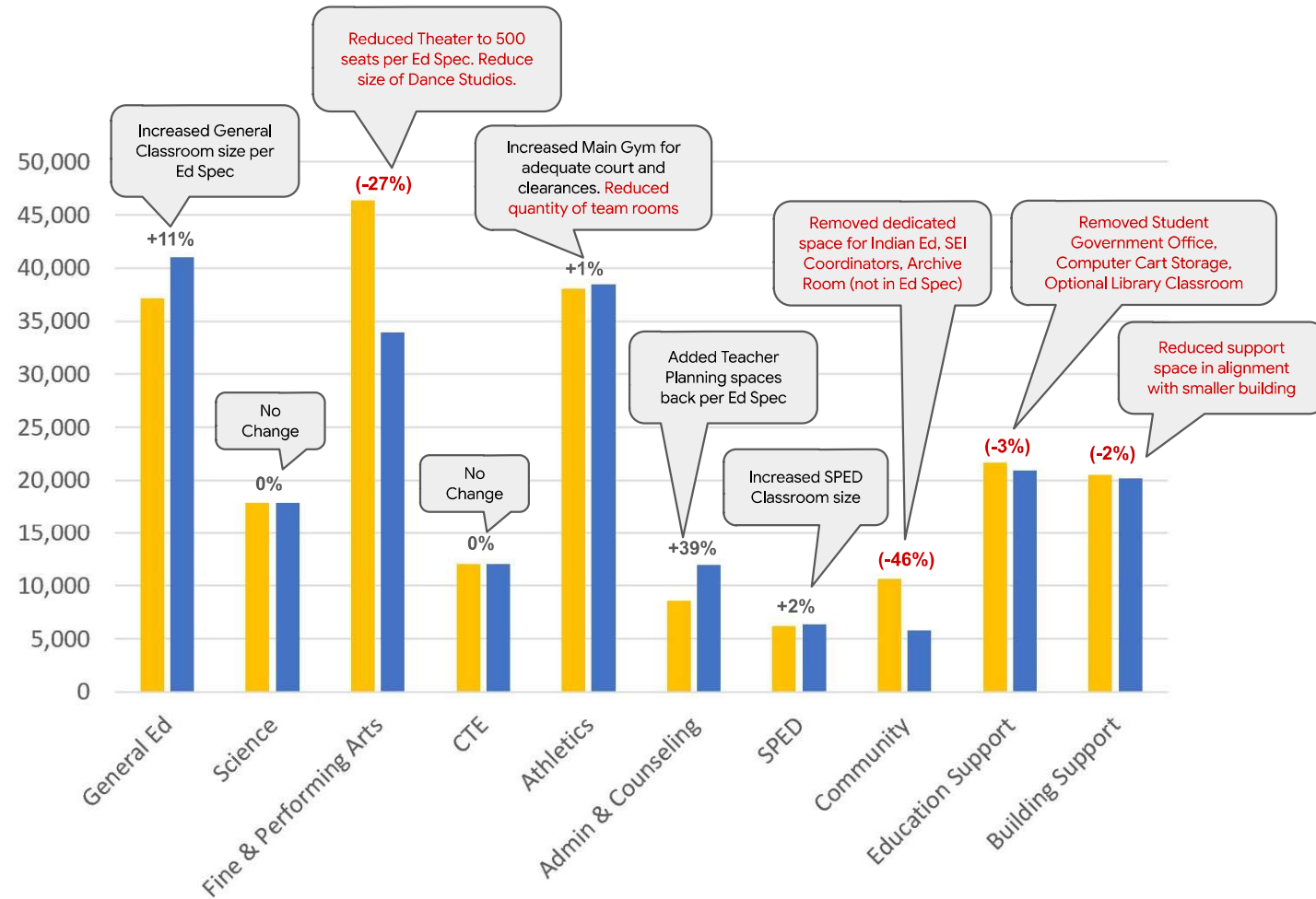
Previous Design

Building Area
311,139 GSF

Jefferson High School Proposed Program

Building Area
296,290 GSF

Per BoE Framework:
Adjust Building Area
to 295,000 GSF
-15,000 GSF



Building Program Comparison

Total Building Area

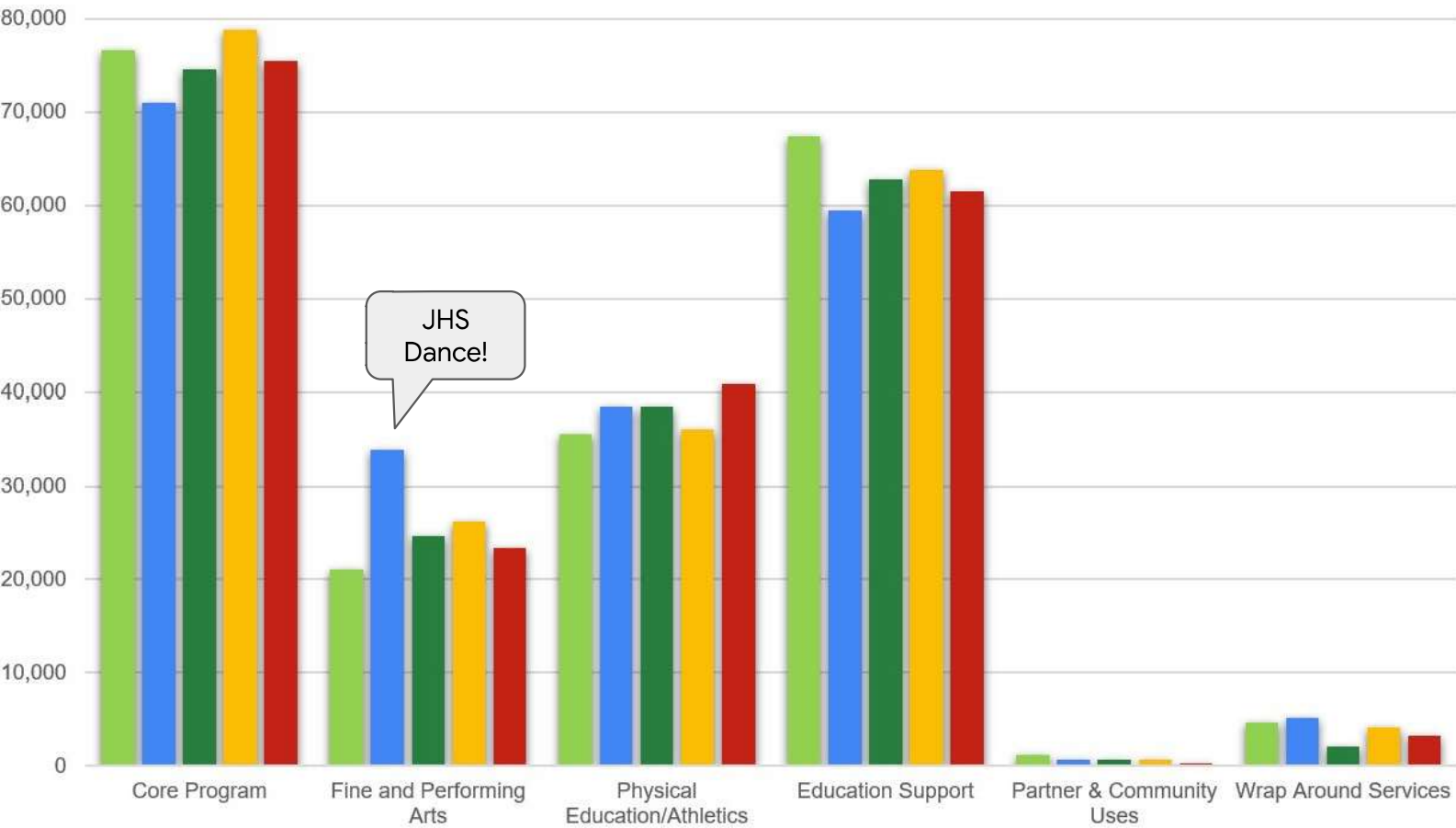
Ed Spec
281,098 sf

Jefferson HS
296,290 sf

Ida B Wells HS
294,847 sf

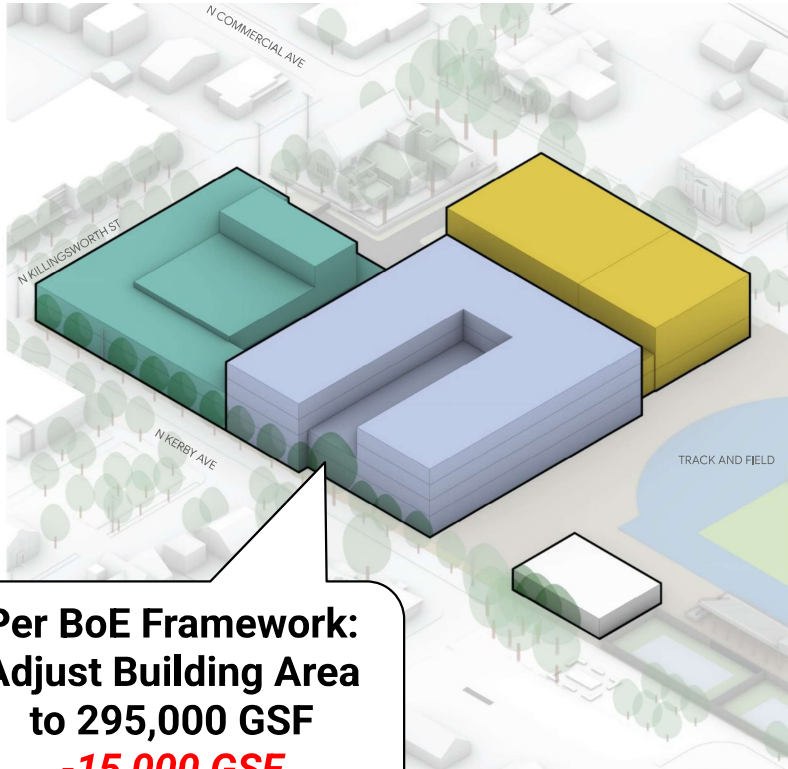
Cleveland HS
296,980 sf

Lincoln HS
295,768 sf



Building Design: Update

Previous Design



ACADEMICS

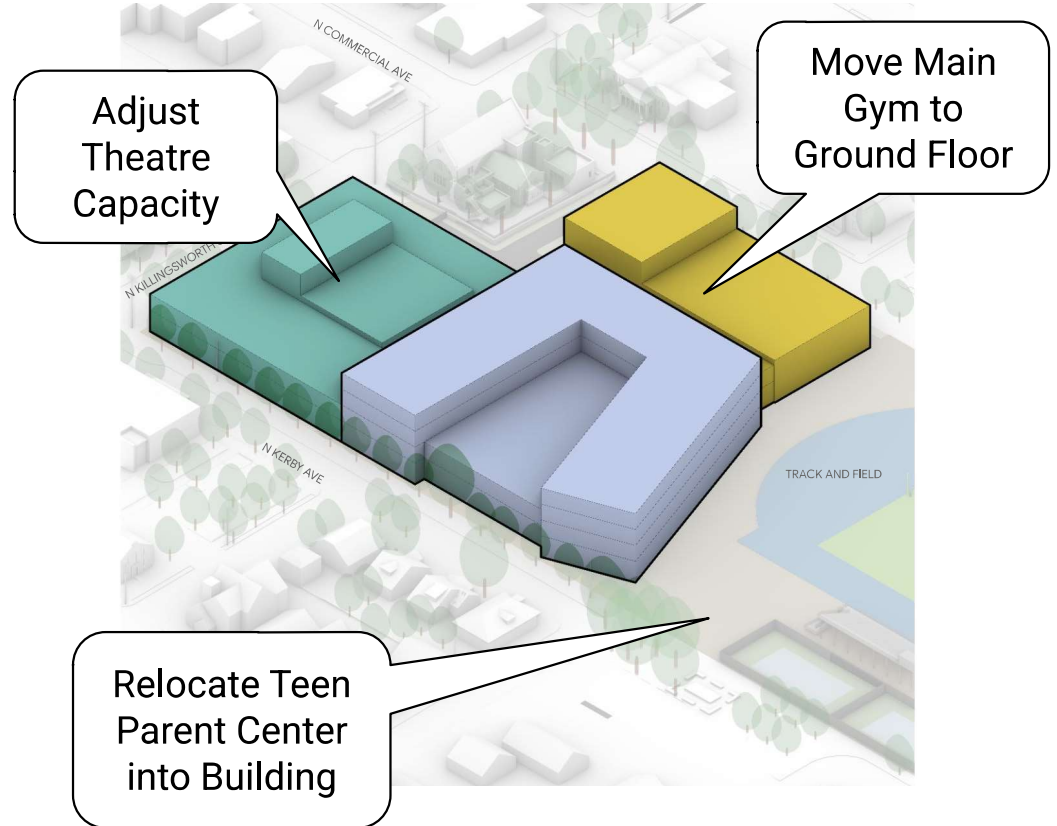


PERFORMING ARTS



ATHLETICS

Updated Design

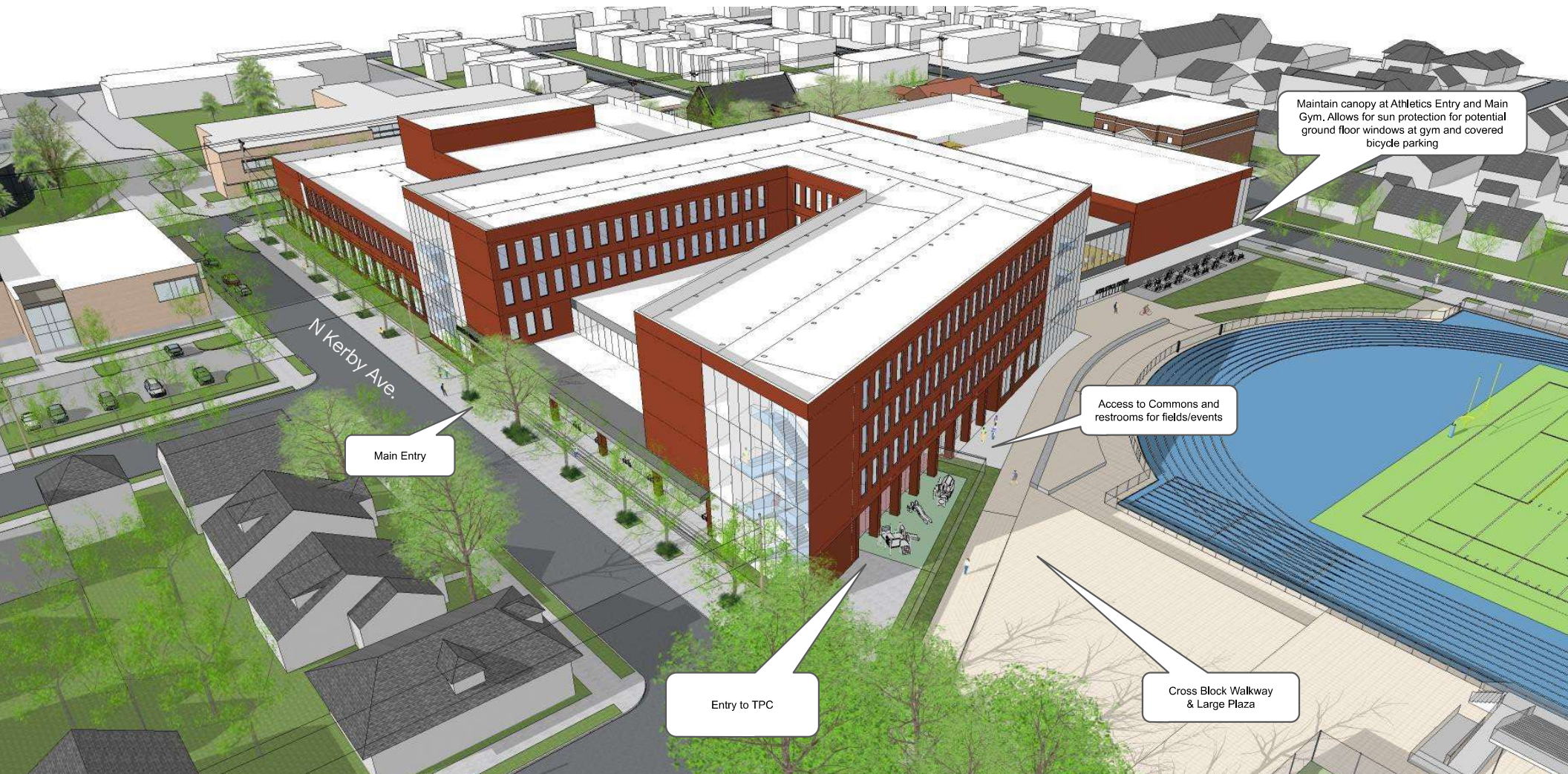


Relocate Teen Parent Center into Building

Adjust Theatre Capacity

Move Main Gym to Ground Floor

SW Axon



SW Entry View



Entry



NW Entry View



Entry Elevation on Kerby



West Axon



Engagement Look Ahead

Community Information Session

May 7, 2025

Community Design Workshop

September 2025

JHS Staff Update

May 6, 2025 | August 2025

Student Demo Design Club

May 14, 2025

Monthly Emails & Website Updates

Questions?



Jefferson High School Modernization Feedback + Question Form

JHS Modernization Feedback + Question Form

Español | Tiếng Việt | 中文 | Русский | Soomaali

Welcome to the Jefferson Modernization Feedback Form

Thank you for taking the time to engage with the Jefferson High School Modernization process. Under the leadership of Superintendent Dr. Kimberlee Armstrong, Portland Public Schools is working to reestablish trust with students, families, staff, and community members through deeper listening, greater transparency, and meaningful follow-through.

This form will remain open throughout the modernization process as an ongoing space for you to share your questions, insights, and priorities — whether or not you've attended a formal session. We will use your feedback to build a living FAQ and return to each engagement opportunity with updates and responses rooted in what we've heard from you.

Our goal is to ensure that the Jefferson community feels seen, heard, and actively involved as we reimagine the future of this historic school together.

To help us better understand who we're hearing from and where we need to deepen our reach, we've included optional demographic questions. These responses are voluntary and will be used to support equitable and inclusive decision-making.

We appreciate your partnership and look forward to building a stronger PPS, together.

<https://forms.gle/EZbaHQUZQfqXBXKE6>

Share Comments with District Leadership



**TOGETHER,
WE RISE**